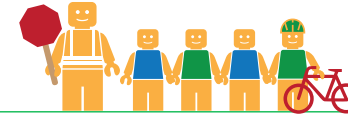


VANNOY ELEMENTARY SCHOOL

ALAMEDA COUNTY UNINCORPORATED AREAS SAFE ROUTES TO SCHOOL PLAN



Public Works Agency
Alameda County



PROJECT OVERVIEW

Vannoy Elementary School is located in Castro Valley, California, and is part of the Castro Valley Unified School District. In 2016-17 there were 464 students enrolled at Vannoy Elementary School. An on-site walk audit was conducted on Wednesday morning, May 10th, 2017 with Principal Greg Ko, Paul J. Kissner (ACPPWA), Patrick Gilster (F&P), Clara Wong (F&P), and Carol Levine (Spokemore).



KEY METRICS AT-A-GLANCE



192 (180)
AM(PM) Peak Hour
Pedestrians at Major
Intersection Access



14 (2)
AM(PM) Peak Hour
Bicycles at Major
Intersection Access



**Crossing
Guard**
Vannoy Avenue/
Gliddon Street
intersection



Measure G
Planned School
Funding



3
Pedestrian-involved
collisions adjacent
to school



0
Bicycle-involved
collisions adjacent
to school

Reported Collisions 2009-2014



ISSUES & CONCERNS

PRIORITY

- 1 Pedestrian visibility and safety at the Vannoy Avenue/Clemans Drive intersection
- 2 Poor vehicle pick-up/drop-off circulation

GENERAL

- 1 Informal Pedestrian Access at Winifred Drive

COLLISION HISTORY

- 1 Pedestrian-involved collisions due to vehicles not yielding to pedestrians in crosswalks
- 2 No bicycle collision reported adjacent to school. Bicycle collisions reported along Redwood Road and Castro Valley Boulevard



PROJECT RECOMMENDATIONS


PRIORITY

- P1** Construct curb extensions and paint high visibility crosswalks along the westbound approach of Vannoy Avenue at Clemans Drive.
Addresses Issue(s): Priority 1, Priority 2
- P2** Formalize traffic control for the student-led drop-off program.
Addresses Issue(s): Priority 2
- P3** Construct curb extensions and paint high visibility crosswalks along the westbound approach of Vannoy Avenue at Gliddon Street. Install "No Left Turn" signs along the southbound approach and the westbound departure.
Addresses Issue(s): Priority 1, Priority 2

GENERAL

- G1** Identify alternative drop-off locations
Addresses Issue(s): General 1

LEGEND

- # Priority Recommendation
- # General Recommendation
- Curb Extension
- Curb Ramp
-  No Left Turn Sign

