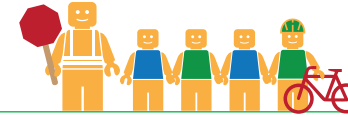


# SUNOL GLEN ELEMENTARY SCHOOL



Public Works Agency  
Alameda County

## ALAMEDA COUNTY UNINCORPORATED AREAS SAFE ROUTES TO SCHOOL PLAN

### PROJECT OVERVIEW

Sunol Glen Elementary School is located in Sunol, California, and is part of the Sunol Glen Unified School District. In 2016-17 there were 278 students enrolled at Sunol Glen Elementary School. An on-site walk audit was conducted on Tuesday afternoon, May 23rd, 2017 with school administrator Miki Whitfield, faculty member Lowell Hoxie, Patrick Gilster (F&P), Meghan Mitman (F&P), and Diwu Zhou (F&P).

### KEY METRICS AT-A-GLANCE



**56 (158)**  
AM(PM) Peak Hour  
Pedestrians at Major  
Intersection Access



**0 (0)**  
AM(PM) Peak Hour  
Bicycles at Major  
Intersection Access



**Crossing  
Guard**  
None



**0**  
Pedestrian-involved  
collisions adjacent  
to school



**0**  
Bicycle-involved  
collisions adjacent  
to school

Reported Collisions 2009-2014



### ISSUES & CONCERNS

#### PRIORITY

- 1** Pedestrian accessibility and safety on Bond Street
- 2** Poor vehicle pick-up/drop-off circulation

#### GENERAL

- 1** High vehicle speeds on Main Street and Bond Street
- 2** Pedestrian visibility on Main Street
- 3** Sidewalk gap on Bond Street

#### COLLISION HISTORY

- 1** No pedestrian collisions reported
- 2** No bicycle collisions reported

### PROJECT RECOMMENDATIONS

#### PRIORITY




- P1** Construct a secondary passenger loading zone with sidewalks adjacent to the school on Bond Street.  
**Addresses Issue(s):** Priority 1 & 2, General 3
- P2** Construct rightturn and leftturn pockets into the school driveway on Main Street.  
**Addresses Issue(s):** Priority 2

#### GENERAL

- G1** As an onsite improvement, enhance the crosswalk with high-visibility striping and advanced yield markings. Repaint faded parking and circulation striping.  
**Addresses Issue(s):** Priority 2
- G2** Restrict parking on Main Street between Bond Street and Niles Canyon Road.  
**Addresses Issue(s):** General 2
- G3** Upgrade the existing midblock crossing on Bond Street.  
**Addresses Issue(s):** Priority 1, General 1
- G4** Intersection enhancements at the Main Street/Bond Street intersection.  
**Addresses Issue(s):** General 1 & 2
- G5** Close the sidewalk gap along Bond Street between Foothill Road and Main Street.  
**Addresses Issue(s):** General 3
- G6** Additional speed enforcement.  
**Addresses Issue(s):** General 1



## LEGEND

- # Priority Recommendation
- # General Recommendation
- Sidewalk/Curb Extension
- White Curb
- Red Curb
-  School Crossing Assembly & Pedestrian Activated Warning Device
-  Curb Ramp
-  No Parking

