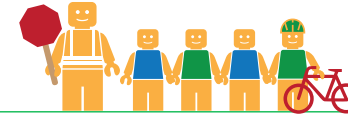


STANTON ELEMENTARY SCHOOL

ALAMEDA COUNTY UNINCORPORATED AREAS SAFE ROUTES TO SCHOOL PLAN



Public Works Agency
Alameda County



PROJECT OVERVIEW

Stanton Elementary School is located in Castro Valley, California, and is part of the Castro Valley Unified School District. In 2016-17 there were 457 students enrolled at Stanton Elementary School. An on-site walk audit was conducted on Thursday morning, April 27th, 2017 with Principal Robin Ormsby, Cynthia Brixie (parent), Paul J. Keener (ACPWA), Patrick Gilster (F&P), Carrie Modi (F&P), and Natalie Chyba (F&P).



KEY METRICS AT-A-GLANCE



252 (219)
AM(PM) Peak Hour
Pedestrians at Major
Intersection Access



No Data Available
AM(PM) Peak Hour
Bicycles at Major
Intersection Access



Crossing Guard
Stanton Avenue/
Somerset Avenue
intersection and Somerset Avenue/
Carnation Lane Intersection



Measure G
Planned School
Funding



0
Pedestrian-involved
collisions adjacent
to school



3
Bicycle-involved
collisions adjacent
to school

Reported Collisions 2009-2014



ISSUES & CONCERNS

PRIORITY

- 1 Crosswalk design and pedestrian visibility concerns
- 2 No crosswalk at pedestrian desire line along Somerset Avenue
- 3 Vehicle circulation and loading zone management issues

GENERAL

- 1 Sidewalk gap along Stanton Avenue

COLLISION HISTORY

- 1 No pedestrian collisions reported
- 2 Bicycle collisions along Stanton Ave



PROJECT RECOMMENDATIONS

PRIORITY

- P1 Paint high-visibility ladder striped crosswalk over the existing crosswalk and install a pedestrian activated warning device to address visibility and speed concerns. Work with traffic enforcement to enforce the red curb located on the southwest side of the crosswalk. Hire a crossing guard at this location.
Addresses Issue(s): Priority 1, Collision 2


- P2 Add a new high-visibility ladder striped crosswalk and tighten the curb radius at the southeast curb.
Addresses Issue(s): Priority 2

- P3 Foliage maintenance, traffic safety volunteer program, and school access map
Addresses Issue(s): Priority 3

GENERAL

- G1 Stanton Avenue Sidewalk Gap Closure
Addresses Issue(s): General 1

LEGEND

- # Priority Recommendation
- # General Recommendation
- Sidewalk/Curb Extension
-  School Crossing Assembly & Pedestrian Activated Warning Device
-  Curb Ramp
- 