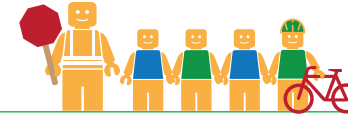


# SAN LORENZO HIGH SCHOOL

## ALAMEDA COUNTY UNINCORPORATED AREAS SAFE ROUTES TO SCHOOL PLAN



Public Works Agency  
Alameda County



### PROJECT OVERVIEW

San Lorenzo High School is located in San Lorenzo, California, and is part of the San Lorenzo Unified School District. In 2016-17 there were 1394 students enrolled at San Lorenzo High School. An on-site walk audit was conducted on Tuesday morning, June 6th, 2017 with Assistant Principal Andrew Vavuris, Ryan McClain (F&P), Carrie Modi (F&P), and Natalie Chyba (F&P).



### KEY METRICS AT-A-GLANCE



**95 (90)**  
AM(PM) Peak Hour  
Pedestrians at Major  
Intersection Access



**10 (11)**  
AM(PM) Peak Hour  
Bicycles at Major  
Intersection Access



**Crossing  
Guard**  
None



**2**  
Pedestrian-involved  
collisions adjacent  
to school



**3**  
Bicycle-involved  
collisions adjacent  
to school

Reported Collisions 2009-2014



### ISSUES & CONCERNS

#### PRIORITY

- 1** Onsite Vehicle Access and Circulation
- 2** Pedestrian accessibility concerns
- 3** Unprotected midblock crossings along Ashland Avenue

#### GENERAL

- 1** High speed of traffic along Lewelling Boulevard

#### COLLISION HISTORY

- 1** Pedestrian-involved collisions due to vehicles not yielding to pedestrians in crosswalk
- 2** Bicycle collisions reported along Hesperian Blvd, A Street, E. 14th Street, and Fargo Ave



### PROJECT RECOMMENDATIONS

#### PRIORITY

- P1** Restrict left turns out of the school driveway along Ashland Avenue; restrict left turns out of the school pick-up/drop-off loop off of Lewelling Boulevard; and add removable bollards to restrict vehicular access between the parking lot and P.E. fields.

Addresses Issue(s): Priority 1



- P2** Add removable bollards to the north gate along Ashland Avenue to restrict vehicular access and allow pedestrian access; add a pedestrian pathway within the east parking lot to keep students from having to weave through traffic; consider adding a walkway along the on-site pick-up/drop-off loop; and bring entryway at student parking lot off of Lewelling Boulevard up to ADA standards

Addresses Issue(s): Priority 2



- P3** Add a midblock crosswalk north of the school driveway along Ashland Avenue with a pedestrian activated warning device, high-visibility ladder striping, curb extensions, and advanced yield lines.

Addresses Issue(s): Priority 3

#### GENERAL



- G1** Implement traffic calming measures, such as coordinating signals at a slower speed of travel, along Lewelling Boulevard. Alternatively, enforce speeds along Lewelling within the vicinity of the high school.

Addresses Issue(s): General 1







- G2** Relocate the existing crosswalk to the south side of Ano Avenue and install curb extensions, add high-visibility ladder striping to the crosswalk, and install a pedestrian activated warning device.

Addresses Issue(s): Collision 1



## LEGEND

- # Priority Recommendation
- # General Recommendation
-  Curb Extension
-  School Crossing Assembly & Pedestrian Activated Warning Device
-  No Left Turn Sign
-  Curb Ramp

