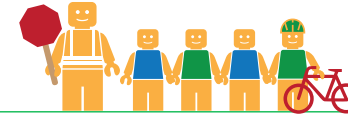


# REDWOOD ALTERNATIVE HIGH SCHOOL

## ALAMEDA COUNTY UNINCORPORATED AREAS SAFE ROUTES TO SCHOOL PLAN



Public Works Agency  
Alameda County

### PROJECT OVERVIEW

Redwood Alternative High School is located in Castro Valley, California, and is part of the Castro Valley Unified School District. In 2016-17 there were 117 students enrolled at Redwood Alternative High School. An on-site walk audit was conducted on Thursday afternoon, May 18th, 2017 with Principal Erica Ehmann, Patrick Gilster (F&P), Clara Wong (F&P), and Carol Levine (Spokemore).

### KEY METRICS AT-A-GLANCE



**No data available**  
AM(PM) Peak Hour  
Pedestrians at Major  
Intersection Access



**No data available**  
AM(PM) Peak Hour  
Bicycles at Major  
Intersection Access



**Crossing Guard**  
None



**Measure G**  
Planned School  
Funding



**0**  
Pedestrian-involved  
collisions adjacent  
to school



**1**  
Bicycle-involved  
collisions adjacent  
to school

Reported Collisions 2009-2014



### ISSUES & CONCERNS

#### PRIORITY

- 1 High vehicle speeds on all roads surrounding school
- 2 Pedestrians visibility and safety at the Clifton Way/Wyndale Drive intersection
- 3 High vehicle speeds on-site

#### GENERAL

- 1 Poor bus pick-up/drop-off circulation
- 2 Lack of signage

#### COLLISION HISTORY

- 1 No pedestrian collisions reported
- 2 Bicycle collisions reported along Redwood Road and Castro Valley Boulevard

### PROJECT RECOMMENDATIONS

#### PRIORITY

- P1** Install school zone signs and traffic calming where needed.  
**Addresses Issue(s):** Priority 1, General 2
- P2** Install a stop sign at the northbound approach at the Clifton Way/Wyndale Drive intersection. Construct curb extensions and paint crosswalks.  
**Addresses Issue(s):** Priority 1 & 2
- P3** Add speed humps onsite.  
**Addresses Issue(s):** Priority 3

#### GENERAL

- G1** As an onsite improvement, reconfigure the rear parking lot.  
**Addresses Issue(s):** General 1
- G2** Install a stop sign at the southbound approach at the Carmel Drive/Wyndale Drive intersection.  
**Addresses Issue(s):** Priority 1
- G3** Increase speed enforcement.  
**Addresses Issue(s):** Priority 1, Priority 3





## LEGEND

- # Priority Recommendation
- # General Recommendation
- Curb Extension
-  School Zone Sign
-  Stop Sign
-  Watch Downhill Speed Sign
-  Curb Ramp
-  Speed Hump

