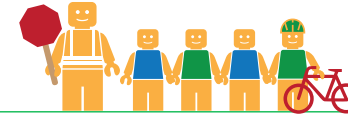


PROCTOR ELEMENTARY SCHOOL

ALAMEDA COUNTY UNINCORPORATED AREAS SAFE ROUTES TO SCHOOL PLAN



Public Works Agency
Alameda County

PROJECT OVERVIEW

Proctor Elementary School is located in Castro Valley, California, and is part of the Castro Valley Unified School District. In 2016-17 there were 490 students enrolled at Proctor Elementary School. An on-site walk audit was conducted on Tuesday morning, May 23rd, 2017 with Principal Lisa Garcia, Patrick Gilster (F&P), Clara Wong (F&P), and Carol Levine (Spokemore).

KEY METRICS AT-A-GLANCE



32 (60)
AM(PM) Peak Hour
Pedestrians at Major
Intersection Access



7 (8)
AM(PM) Peak Hour
Bicycles at Major
Intersection Access



**Crossing
Guard**
Redwood Road/
Buti Park Drive
intersection



Measure G
Planned School
Funding



1
Pedestrian-involved
collisions adjacent
to school



1
Bicycle-involved
collisions adjacent
to school

Reported Collisions 2009-2014



ISSUES & CONCERNS

PRIORITY

- 1** Pedestrian visibility and safety at the Redwood Road/ Buti Park Drive intersection
- 2** Cars use bike lane to circumvent crosswalk queues
- 3** Sidewalk gaps on Proctor Road

GENERAL

- 1** Illegal U-Turns
- 2** High vehicle speeds and poor sight distance on Redwood Road due to grade of roadway
- 3** Unprotected walkway in school parking lot
- 4** Lack of crosswalks on Redwood Road south of Hillside Drive

COLLISION HISTORY

- 1** Pedestrian-involved collision due to pedestrian not utilizing the crosswalk
- 2** Bicycle collisions reported along Redwood Road and Castro Valley Boulevard

PROJECT RECOMMENDATIONS



PRIORITY

- P1** Construct a pedestrian refuge at the existing crosswalk at the Redwood Road/Buti Park Drive intersection. Paint yield lines in advance of the crosswalk.
Addresses Issue(s): Priority 1, General 2, Collision 1
- P2** Add buffered bike lanes along Redwood Road.
Addresses Issue(s): Priority 2, Collision 2
- P3** Close the sidewalk gap along Proctor Road between Redwood Road and Walnut Road/ Ewing Road.
Addresses Issue(s): Priority 3

GENERAL

- G1** Enforcement of illegal U-Turns.
Addresses Issue(s): General 1
- G2** As an onsite improvement, redesign the parking lot to improve pedestrian safety.
Addresses Issue(s): General 3
- G3** Install a crosswalk with high-visibility ladder striping, curb extensions, and a pedestrian activated warning device at the southbound approach of the Redwood Road/Seaview Avenue intersection.
Addresses Issue(s): General 4

LEGEND

- # Priority Recommendation
- # General Recommendation
- Sidewalk/Curb Extension
- Red Curb
- White Curb
-  School Crossing Assembly & Pedestrian Activated Warning Device
-  Curb Ramp

