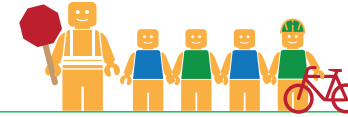


PALOMARES ELEMENTARY SCHOOL



Public Works Agency
Alameda County

ALAMEDA COUNTY UNINCORPORATED AREAS SAFE ROUTES TO SCHOOL PLAN

PROJECT OVERVIEW

Palomares Elementary School is located in Castro Valley, California, and is part of the Castro Valley Unified School District. In 2016-17 there were 143 students enrolled at Palomares Elementary School. An on-site walk audit was conducted on Thursday morning, June 1st, 2017 with Principal Jennifer Tomita, Site Council Marlis Bruns, Ryan McClain (F&P), Meghan Mitman (F&P), and Diwu Zhou (F&P).

KEY METRICS AT-A-GLANCE



18 (0)
AM(PM) Peak Hour
Pedestrians at Major
Intersection Access



3 (1)
AM(PM) Peak Hour
Bicycles at Major
Intersection Access



**Crossing
Guard**
None



Measure G
Planned School
Funding



0
Pedestrian-involved
collisions adjacent
to school



0
Bicycle-involved
collisions adjacent
to school

Reported Collisions 2009-2014



ISSUES & CONCERNS

PRIORITY

- 1** High vehicle speeds on Palo Verde Road
- 2** Pedestrian safety
- 3** Poor vehicle pick-up/drop-off circulation

GENERAL

- 1** Right-out restriction at school driveway

COLLISION HISTORY

- 1** No pedestrian collisions reported
- 2** No bicycle collisions reported

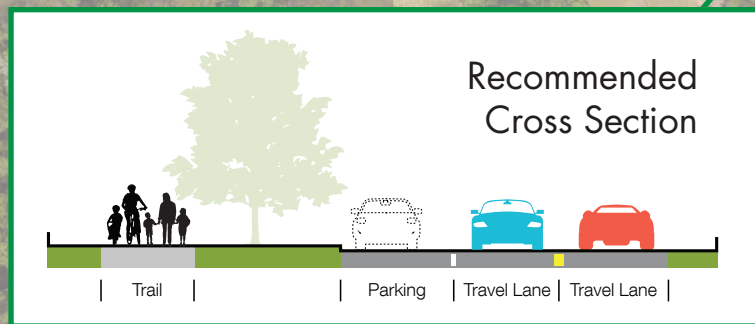
PROJECT RECOMMENDATIONS

PRIORITY

- P1** Install speed humps and/or Vehicle Speed Feedback Signs on Palo Verde Road at the beginning of the school zone
Addresses Issue(s): Priority 1
- P2** Widen the shoulder of Palo Verde Road west of Palomares Road to provide parking. Install a pedestrian walkway or path if room is available.
Addresses Issue(s): Priority 2
- P3** Construct a pedestrian walkway at the easterly driveway and paint a crosswalk on the northbound approach of Palomares Road at Palo Verde Road.
Addresses Issue(s): Priority 2

GENERAL

- G1** As an onsite improvement, add soft-tip posts for additional vehicle delineation in pick-up/drop-off area.
Addresses Issue(s): Priority 3
- G2** Reevaluate right-out restriction at exiting school driveway
Addresses Issue(s): General 1



LEGEND

- Priority Recommendation
- General Recommendation
- Variable Speed Feedback Sign
- Sidewalk
- Curb Ramp

100'
0' 200'
Improvements not to scale

FEHR PEERS