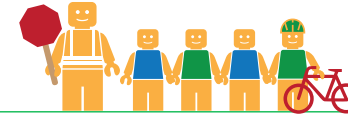


MARSHALL ELEMENTARY SCHOOL

ALAMEDA COUNTY UNINCORPORATED AREAS SAFE ROUTES TO SCHOOL PLAN



Public Works Agency
Alameda County

PROJECT OVERVIEW

Marshall Elementary School is located in Castro Valley, California, and is part of the Castro Valley Unified School District. In 2016-17 there were 475 students enrolled at Marshall Elementary School. An on-site walk audit was conducted on Tuesday afternoon, May 9th, 2017 with Principal Tracie Christmas, Jane Reyes (parent), Clara Wong (F&P), and Carol Levine (Spokemore).

KEY METRICS AT-A-GLANCE



184 (180)
AM(PM) Peak Hour
Pedestrians at Major
Intersection Access



14 (2)
AM(PM) Peak Hour
Bicycles at Major
Intersection Access



**Crossing
Guard**
Marshall Street/
Gem Avenue intersection



Measure G
Planned School
Funding



0
Pedestrian-involved
collisions adjacent
to school



0
Bicycle-involved
collisions adjacent
to school

Reported Collisions 2009-2014



ISSUES & CONCERNS

PRIORITY

- 1** Pedestrian safety at the Omega Avenue/Fern Way intersection
- 2** Poor visibility for pedestrian crossings along school frontage
- 3** Lack of parking enforcement along Marshall Street

GENERAL

- 1** High vehicle speeds on Omega Avenue
- 2** Poor vehicle pick-up/drop-off circulation

COLLISION HISTORY

- 1** No pedestrian collisions reported
- 2** No bicycle collision reported adjacent to school. Bicycle collisions reported along Redwood Road and Castro Valley Boulevard

PROJECT RECOMMENDATIONS

PRIORITY

- P1** Hire a crossing guard at the Omega Avenue/Fern Way intersection.
Addresses Issue(s): Priority 1, General 1
- P2** Paint crosswalks on the northbound and westbound approach to facilitate pedestrian desire lines. Install a school zone sign prior to the intersection on the westbound approach.
Addresses Issue(s): Priority 2
- P3** Enforcement of illegal parking along red curbs and in front of residential driveways.
Addresses Issue(s): Priority 3

GENERAL

- G1** As an onsite improvement, reinforce the right-turn only restriction out of the passenger pick-up/drop-off area with signing and striping.
Addresses Issue(s): General 2
- G2** Develop a Student Safety Patrol program.
Addresses Issue(s): General 2
- G3** Construct a pedestrian path from the pedestrian loading zone to the main school gate.
Addresses Issue(s): General 2

LEGEND

- Priority Recommendation
- General Recommendation
- Sidewalk
- School Zone Sign
- Curb Ramp
- Crossing Guard
- School Safety Patrol
- No Left Turn Sign

