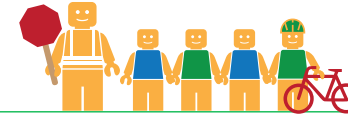


# LORENZO MANOR ELEMENTARY SCHOOL

## ALAMEDA COUNTY UNINCORPORATED AREAS SAFE ROUTES TO SCHOOL PLAN



Public Works Agency  
Alameda County

### PROJECT OVERVIEW

Lorenzo Manor Elementary School is located in Hayward, California, and is part of the San Lorenzo Unified School District. In 2016-17 there were 596 students enrolled at Lorenzo Manor Elementary School. An on-site walk audit was conducted on Monday afternoon, May 8th, 2017 with Principal Elizabeth Tipping, Ryan McClain (F&P), and Teresa Peterson (F&P).

### KEY METRICS AT-A-GLANCE



**155 (127)**  
AM(PM) Peak Hour  
Pedestrians at Major  
Intersection Access



**3 (4)**  
AM(PM) Peak Hour  
Bicycles at Major  
Intersection Access



**Crossing  
Guard**  
Hacienda Avenue/  
Ricardo Avenue



**4**  
Pedestrian-involved  
collisions adjacent  
to school



**2**  
Bicycle-involved  
collisions adjacent  
to school

Reported Collisions 2009-2014



### ISSUES & CONCERNS

#### PRIORITY

- 1** Pedestrian visibility concerns at the Bengal Avenue/ Ginger Avenue intersection
- 2** Pedestrian visibility concerns along Perkins Drive
- 3** Pedestrian access to school frontage

#### GENERAL

- 1** Poor vehicle pick-up/drop-off circulation

#### COLLISION HISTORY

- 1** Pedestrian-involved collisions due to vehicles not yielding to pedestrians
- 2** Bicycle collisions reported along Washington Avenue and Hesperian Boulevard

### PROJECT RECOMMENDATIONS

#### PRIORITY

- P1** Install crosswalks with high-visibility ladder striping and curb extensions at the Ginger Avenue/ Bengal Avenue intersection.  
**Addresses Issue(s):** Priority 1
- P2** Install crosswalks with high-visibility ladder striping along Perkins Drive at Bengal Avenue and Royal Avenue.  
**Addresses Issue(s):** Priority 2
- P3** Install a midblock crosswalk on Bengal Ave.  
**Addresses Issue(s):** Priority 3

#### GENERAL

- G1** As an onsite improvement, install additional signage in the passenger loading area in both English and Spanish.  
**Addresses Issue(s):** General 1







SAFE ROUTES TO SCHOOL  
ALAMEDA COUNTY UNINCORPORATED AREAS



## LEGEND

- # Priority Recommendation
- # General Recommendation
- Curb Extension
-  School Crossing Assembly & Pedestrian Activated Warning Device
-  Curb Ramp

0' 100' 200'  
Improvements not to scale

FEHR PEERS