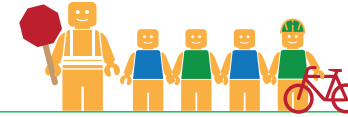


# KIPP KING COLLEGIATE HIGH SCHOOL



Public Works Agency  
Alameda County

## ALAMEDA COUNTY UNINCORPORATED AREAS SAFE ROUTES TO SCHOOL PLAN

### PROJECT OVERVIEW

KIPP King Collegiate High School is a Public Charter School located in San Lorenzo, California. In 2016-17 there were 591 students enrolled at KIPP King Collegiate High School. An on-site walk audit was conducted on Wednesday morning, July 5th, 2017 with Patrick Gilster (F&P), Eleanor Leshner (F&P), and Carol Levine (Spokemore).

### KEY METRICS AT-A-GLANCE



**No Data Available**  
AM(PM) Peak Hour  
Pedestrians at Major  
Intersection Access



**No Data Available**  
AM(PM) Peak Hour  
Bicycles at Major  
Intersection Access



**Crossing  
Guard**  
None



**3**  
Pedestrian-involved  
collisions adjacent  
to school



**0**  
Bicycle-involved  
collisions adjacent  
to school

Reported Collisions 2009-2014



### ISSUES & CONCERNS

#### PRIORITY

- 1** Pedestrian access to campus
- 2** Pedestrian safety along Grant Avenue
- 3** Pedestrian visibility at major school access intersections

#### COLLISION HISTORY

- 1** Pedestrian-involved collision at railroad crossing
- 2** No bicycle collisions reported

### PROJECT RECOMMENDATIONS

#### PRIORITY



- P1** Re-open pedestrian crossing over San Lorenzo Creek  
**Addresses Issue(s):** Priority 1
- P2** Install Trail Crossing signs (W11-15P) at Grant Avenue/  
Via Nueva and Grant Avenue/Bockman Road  
**Addresses Issue(s):** Priority 2
- P3** Railroad Safety Education Program  
**Addresses Issue(s):** Priority 2

#### GENERAL

- G1** Install a crosswalk with high-visibility ladder striping  
at the westbound approach of the Grant Avenue/  
Bockman Road intersection.  
**Addresses Issue(s):** Priority 3
- G2** Construct curb extensions at the Via Barrett/  
Bockman Road intersection.  
**Addresses Issue(s):** Priority 3
- G3** Install crosswalks with high-visibility ladder striping at  
the Grant Avenue/Via Nueva intersection. Install a  
pedestrian activated warning device at this location.  
**Addresses Issue(s):** Priority 3
- G4** Stripe new crosswalks with high-visibility ladder striping  
at the westbound and southbound approaches of the  
Via Barrett/Via Nueva intersection. Construct curb  
extensions at this location.  
**Addresses Issue(s):** Priority 3



## LEGEND

- P1 # Priority Recommendation
- G4 # General Recommendation
- Sidewalk/Curb Extension
-  School Crossing Assembly & Pedestrian Activated Warning Device
-  Curb Ramp

