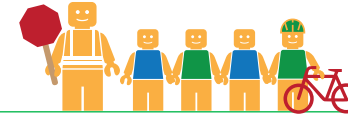


# HILLSIDE ELEMENTARY SCHOOL

## ALAMEDA COUNTY UNINCORPORATED AREAS SAFE ROUTES TO SCHOOL PLAN



Public Works Agency  
Alameda County

### PROJECT OVERVIEW

Hillside Elementary School is located in San Lorenzo, California, and is part of the San Lorenzo Unified School District. In 2016-17 there were 479 students enrolled at Hillside Elementary School. An on-site walk audit was conducted on Monday morning, May 1st, 2017 with Office Manager Cynthia Flemister, Patrick Gilster (F&P), Carrie Modi (F&P), and Natalie Chyba (F&P).

### KEY METRICS AT-A-GLANCE



**300 (201)**  
AM(PM) Peak Hour  
Pedestrians at Major  
Intersection Access



**5 (3)**  
AM(PM) Peak Hour  
Bicycles at Major  
Intersection Access



**Crossing  
Guard**  
None



**No Planned  
Funding**  
Planned School Funding



**1**  
Pedestrian-involved  
collisions adjacent  
to school



**1**  
Bicycle-involved  
collisions adjacent  
to school

Reported Collisions 2009-2014



### ISSUES & CONCERNS

#### PRIORITY

- 1 Poor yielding at the Marcella Street midblock crosswalk
- 2 Poor pedestrian facilities at the Marcella Street/ 159th Avenue intersection
- 3 Severe congestion along Marcella Street during pick-up/drop-off

#### GENERAL

- 1 Poor utilization of existing facilities

#### COLLISION HISTORY

- 1 Pedestrian-involved collisions due to vehicles not yielding to pedestrians and pedestrians in the road
- 2 Bicycle collisions reported along E. 14th St

### PROJECT RECOMMENDATIONS

#### PRIORITY





- P1** Marcella Street Raised Midblock Crosswalk Project  
**Addresses Issue(s):** Priority 1
- P2** Marcella Street/159th Avenue intersection improvements, including curb extensions, advanced stop bars, and high-visibility ladder striping at all approaches, including along the south approach.  
**Addresses Issue(s):** Priority 2

#### GENERAL

- G1** Implement a one-way onsite loading zone within the existing staff parking lot. As a long term project, consider an onsite loading loop as an extension of the existing staff parking lot.  
**Addresses Issue(s):** General 1
- G2** Bicycle User Education Program  
**Addresses Issue(s):** Collision 2
- G3** School district to continue feasibility study of additional parking and drop-off.  
**Addresses Issue(s):** General 3



## LEGEND

-  Priority Recommendation
-  General Recommendation
-  Sidewalk/Curb Extension
-  Curb Ramp

0' 100' 200'  
Improvements not to scale

HILLSIDE  
ELEMENTARY  
SCHOOL

P1

G1

FEHR PEERS