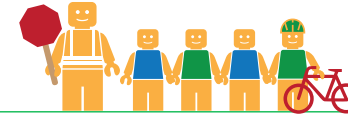


HAYWARD HIGH SCHOOL

ALAMEDA COUNTY UNINCORPORATED AREAS SAFE ROUTES TO SCHOOL PLAN



Public Works Agency
Alameda County



PROJECT OVERVIEW

Hayward High School is located in Hayward, California, and is part of the Hayward Unified School District. In 2016-17 there were 1576 students enrolled at Hayward High School. An on-site walk audit was conducted on Thursday morning, May 25th, 2017 with Principal Dave Seymour, Assistant Principal Alvaro Franco, Ryan McClain (F&P), Meghan Mitman (F&P), and Marissa Milam (F&P).



KEY METRICS AT-A-GLANCE



120 (258)
AM(PM) Peak Hour
Pedestrians at Major
Intersection Access



6 (8)
AM(PM) Peak Hour
Bicycles at Major
Intersection Access



**Crossing
Guard**
None



1
Pedestrian-involved
collisions adjacent
to school



2
Bicycle-involved
collisions adjacent
to school

Reported Collisions 2009-2014



ISSUES & CONCERNS

PRIORITY

- 1** High speed vehicles
- 2** Pedestrian visibility concerns
- 3** Illegal U-Turns

GENERAL

- 1** Sidewalk gaps

COLLISION HISTORY

- 1** Pedestrian-involved collision due to pedestrian in road
- 2** Bicycle collisions reported along E Street



PROJECT RECOMMENDATIONS

PRIORITY

- P1** Explore a roundabout and realign the East Avenue/E Street intersection. Install a crosswalk with high-visibility ladder striping across East Avenue.
Addresses Issue(s): Priority 1 & 2



- P2** Enforcement of illegal U-turns
Addresses Issue(s): Priority 3

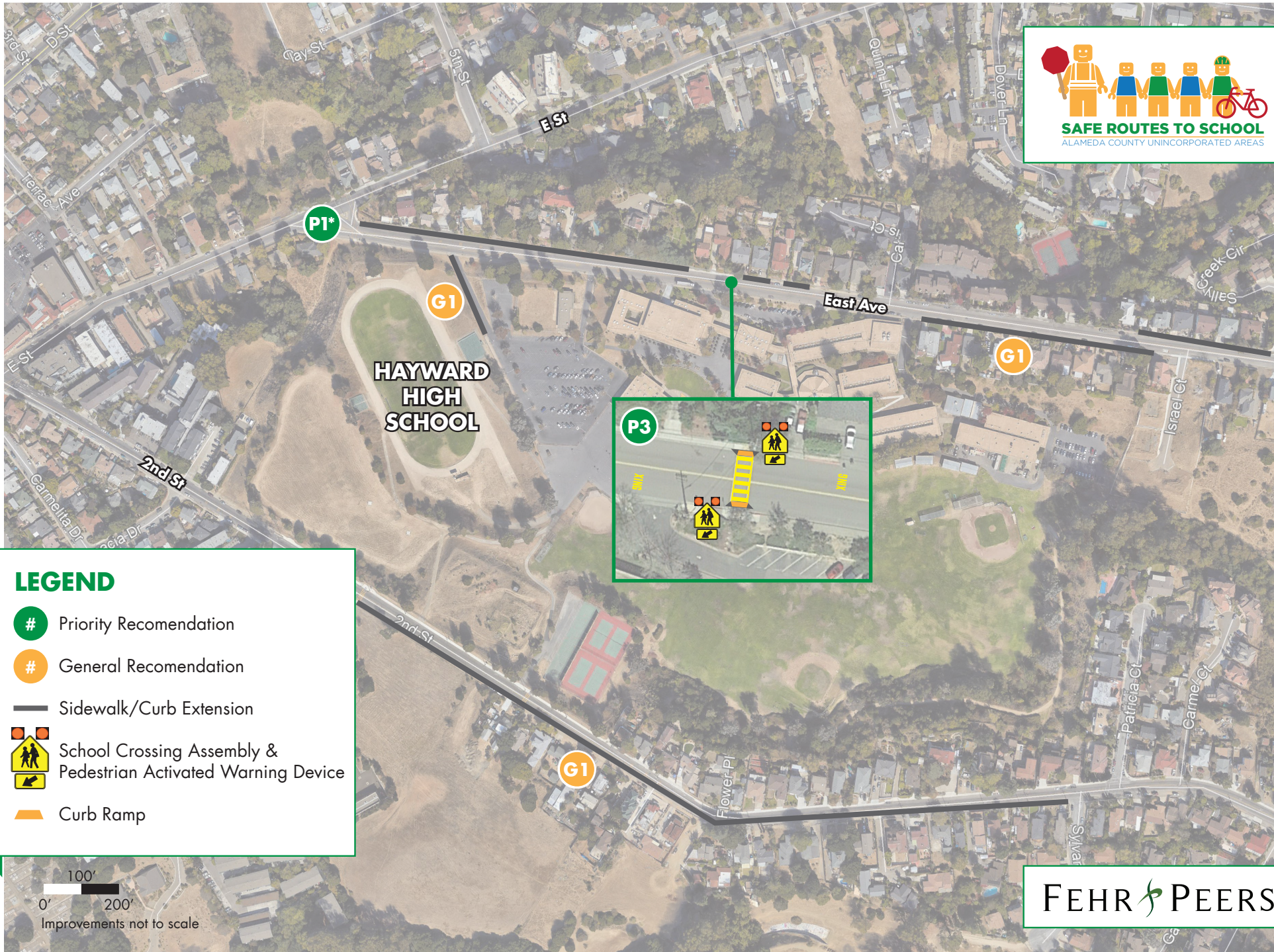


- P3** Add high visibility ladder striping to the existing crosswalk in front of school. Install a pedestrian activated warning device.
Addresses Issue(s): Priority 1 & 2

GENERAL



- G1** Construct sidewalks on East Avenue between E Street and Hansen Road, on Second Street between Walpert Street and Sylvan Glen Court, and add walkways along the driveways of the student parking lot.
Addresses Issue(s): General 1



LEGEND

- # Priority Recommendation
- # General Recommendation
- Sidewalk/Curb Extension
- School Crossing Assembly & Pedestrian Activated Warning Device
- Curb Ramp

FEHR PEERS

*Improvement is shown on separate graphic