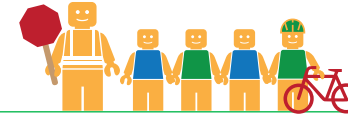


GRANT ELEMENTARY SCHOOL

ALAMEDA COUNTY UNINCORPORATED AREAS SAFE ROUTES TO SCHOOL PLAN



Public Works Agency
Alameda County



PROJECT OVERVIEW

Grant Elementary School is located in San Lorenzo, California, and is part of the San Lorenzo Unified School District. In 2016-17 there were 405 students enrolled at Grant Elementary School. An on-site walk audit was conducted on Wednesday afternoon, May 10th, 2017 with Principal Joshua Jackson, Patrick Gilster (F&P), and Teresa Peterson (F&P).



KEY METRICS AT-A-GLANCE



194 (403)
AM(PM) Peak Hour
Pedestrians at Major
Intersection Access



8 (14)
AM(PM) Peak Hour
Bicycles at Major
Intersection Access



Crossing Guard
Grant Avenue/Paseo Del
Campo intersection



2
Pedestrian-involved
collisions adjacent
to school



2
Bicycle-involved
collisions adjacent
to school

Reported Collisions 2009-2014



ISSUES & CONCERNS

PRIORITY

- 1** Pedestrian access and safety along Washington Avenue
- 2** Pedestrian visibility concerns at the Grant Avenue/Paseo del Campo intersection
- 3** Pedestrian circulation and safety at the Grant Avenue/Washington Avenue intersection

GENERAL

- 1** Pedestrian access to school frontage
- 2** Poor vehicle pick-up/drop-off circulation

COLLISION HISTORY

- 1** Pedestrian-involved collisions due to pedestrian not utilizing crosswalks
- 2** Bicycle collisions reported along Washington Avenue and Hesperian Boulevard



PROJECT RECOMMENDATIONS

PRIORITY

- P1** Install a fence in the median of Washington Avenue. Tighten curb radii and install directional curb ramps and pedestrian count-down signal heads at the Washington Avenue/Via Enrico intersection.
Addresses Issue(s): Priority 1
- P2** Intersection improvements at the Grant Avenue/Paseo Del Campo intersection.
Addresses Issue(s): Priority 2
- P3** As a near-term project, stripe the westbound crosswalk and add a pedestrian scramble phase at the Grant Avenue/Washington Avenue intersection. In the long term, remove slip lanes and increase curb space.
Addresses Issue(s): Priority 3

GENERAL

- G1** Install a midblock crosswalk on Grant Ave.
Addresses Issue(s): General 1
- G2** Encourage parents to park in the neighborhood to the east of campus and walk to pick up students.
Addresses Issue(s): General 2



GRANT ELEMENTARY SCHOOL

LEGEND

- Priority Recommendation
- General Recommendation
- Curb Extension
- Fence
- School Crossing Assembly & Pedestrian Activated Warning Device
- Curb Ramp
- Pedestrian Scramble
- Pedestrian Count-down Signal Heads

0' 100' 200'
Improvements not to scale

FEHR PEERS