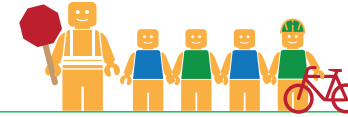


GOLDEN OAK MONTESSORI SCHOOL



Public Works Agency
Alameda County

ALAMEDA COUNTY UNINCORPORATED AREAS SAFE ROUTES TO SCHOOL PLAN



PROJECT OVERVIEW

Golden Oak Montessori School is a Public Charter School located in Castro Valley, California. In 2016-17 there were 239 students enrolled at Golden Oak Montessori School. An on-site walk audit was conducted on Tuesday afternoon, May 13th, 2017 with Principal Gena Engelfried, Leilani Nguyen (parent), Patrick Gilster (F&P), Melody Gu (F&P), and Carol Levine (Spokemore).



KEY METRICS AT-A-GLANCE



No Data Available
AM(PM) Peak Hour
Pedestrians at Major
Intersection Access



No Data Available
AM(PM) Peak Hour
Bicycles at Major
Intersection Access



**Crossing
Guard**
None



4
Pedestrian-involved
collisions adjacent
to school



0
Bicycle-involved
collisions adjacent
to school

Reported Collisions 2009-2014



ISSUES & CONCERNS

PRIORITY

- 1 High vehicle speeds along Grove Way
- 2 Pedestrian safety and visibility
- 3 Lack of school zone signage

GENERAL

- 1 Sidewalk gaps along Idena Avenue
- 2 Use of red curb in front of school as loading zone
- 3 Vehicle conflicts in school driveway
- 4 Parked cars limit pedestrian access along Jones Street

COLLISION HISTORY

- 1 Pedestrian-involved collisions due to vehicles not yielding to pedestrians in crosswalks
- 2 No bicycle collision reported adjacent to school. Bicycle collisions reported along Redwood Road and Castro Valley Boulevard



PROJECT RECOMMENDATIONS

PRIORITY

- P1** Virgil Street/Grove Way Intersection Improvements
Addresses Issue(s): Priority 1, Priority 2
- P2** Redwood Road Enhancements & Traffic Safety Education
Addresses Issue(s): Priority 2
- P3** Install School Zone Signage at appropriate distances from all school access points.
Addresses Issue(s): Priority 3

GENERAL

- G1** Idena Avenue Sidewalk Gaps
Addresses Issue(s): General 1
- G2** Stripe a loading zone along the school frontage.
Addresses Issue(s): General 2, General 3, General 4

LEGEND

- # Priority Recommendation
- # General Recommendation
- Sidewalk/Curb Extension
-  School Crossing Assembly & Pedestrian Activated Warning Device
-  School Zone
-  School Zone Ahead
-  Curb Ramp

