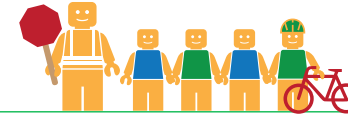


FAIRVIEW ELEMENTARY SCHOOL

ALAMEDA COUNTY UNINCORPORATED AREAS SAFE ROUTES TO SCHOOL PLAN



Public Works Agency
Alameda County



PROJECT OVERVIEW

Fairview Elementary School is located in Hayward, California, and is part of the Hayward Unified School District. In 2016-17 there were 579 students enrolled at Fairview Elementary School. An on-site walk audit was conducted on Monday afternoon, May 22nd, 2017 with Principal John Melvin, Ryan McClain (F&P), Meghan Mitman (F&P), and Diwu Zhou (F&P).



KEY METRICS AT-A-GLANCE



33 (20)
AM(PM) Peak Hour
Pedestrians at Major
Intersection Access



0 (0)
AM(PM) Peak Hour
Bicycles at Major
Intersection Access



**Crossing
Guard**
Maud Avenue/
Romagnolo Street intersection

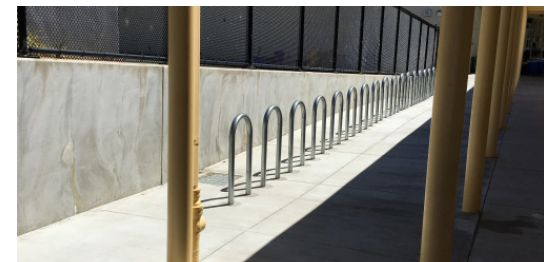


0
Pedestrian-involved
collisions adjacent
to school



0
Bicycle-involved
collisions adjacent
to school

Reported Collisions 2009-2014



ISSUES & CONCERNS

PRIORITY

- 1** Poor vehicle pick-up/drop-off circulation
- 2** Parked cars force pedestrians into the street due to lack of sidewalks

GENERAL

- 1** Wide intersections and curb radii encourage high vehicle turning speeds
- 2** Parent complaints of vehicle speeds on Maud Avenue
- 3** School bus pick-up/drop-off relocation
- 4** Unpainted/Faded curbs

COLLISION HISTORY

- 1** No pedestrian collisions reported
- 2** No bicycle collisions reported



PROJECT RECOMMENDATIONS







PRIORITY

- P1** Improve vehicle circulation by repainting red curb/ no parking zones near exiting driveways.
Addresses Issue(s): Priority 1, General 4
- P2** D Street corridor enhancements.
Addresses Issue(s): Priority 2, General 1

GENERAL

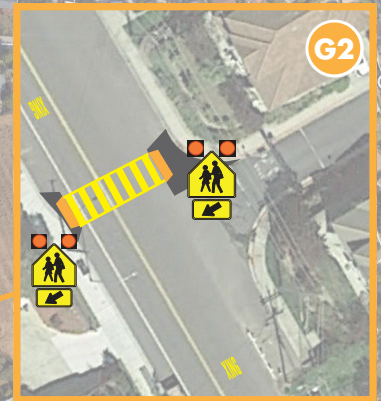
- G1** Fairview Avenue corridor enhancements
Addresses Issue(s): Priority 2
- G2** Construct second mid-block crossing south of school on Maud Avenue. Install speed feedback sign on Maud Avenue north of school.
Addresses Issue(s): Priority 2, General 2
- G3** Coordinate relocation of school bus pick-up/drop-off to occur at AC Transit bus stop.
Addresses Issue(s): General 3
- G4** Reopen D Street access to Fairview Elementary School. Hire crossing guard at mid-block crossing.
Addresses Issue(s): Priority 2

LEGEND

- # Priority Recommendation
- # General Recommendation
-  Variable Speed Feedback Sign
-  Sidewalk/Curb Extension
-  Red Curb
-  School Crossing Assembly & Pedestrian Activated Warning Device
-  Curb Ramp
-  Crossing Guard



**FAIRVIEW
ELEMENTARY
SCHOOL**



FEHR PEERS

100'
0' 200'
Improvements not to scale