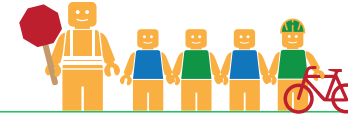


# EDENDALE MIDDLE SCHOOL

## ALAMEDA COUNTY UNINCORPORATED AREAS SAFE ROUTES TO SCHOOL PLAN



Public Works Agency  
Alameda County



### PROJECT OVERVIEW

Edendale Middle School is located in San Lorenzo, California, and is part of the San Lorenzo Unified School District. In 2016-17 there were 706 students enrolled at Edendale Middle School. An on-site walk audit was conducted on Tuesday afternoon, May 30th, 2017 with Assistant Principal Elisha Jackson, Patrick Gilster (F&P), Carrie Modi (F&P), and Natalie Chyba (F&P).



### KEY METRICS AT-A-GLANCE



**No Data Available**  
AM(PM) Peak Hour  
Pedestrians at Major  
Intersection Access



**No Data Available**  
AM(PM) Peak Hour  
Bicycles at Major  
Intersection Access



**Crossing Guard**  
None



**3**  
Pedestrian-involved  
collisions adjacent  
to school



**5**  
Bicycle-involved  
collisions adjacent  
to school

Reported Collisions 2009-2014



### ISSUES & CONCERNS

#### PRIORITY

- 1 Crosswalk design and pedestrian visibility issues at the midblock crosswalk on Ashland Avenue
- 2 Poor crosswalk visibility and long crossing distance at the E. 14th Street/163rd Avenue intersection
- 3 Poor delineation of crosswalk and no pedestrian count-down signal heads at the E. 14th Street/162nd Avenue intersection
- 4 No pedestrian count-down/audio-enabled signal heads and congestion of left-turning vehicles along Ashland Avenue at the E.14th Street/Ashland Avenue intersection

#### GENERAL

- 1 School Zone Classification
- 2 South driveway congestion and pedestrian visibility concerns
- 3 Illegal student drop-off/pick-up in staff parking lot
- 4 Poor bicycle facilities along E. 14th Street

#### COLLISION HISTORY

- 1 Pedestrian-involved collisions due to vehicles not yielding to pedestrians in crosswalk
- 2 Bicycle collisions reported along E. 14th Street



### PROJECT RECOMMENDATIONS

#### PRIORITY



- P1** Per the Alameda County SR2S Project, install a pedestrian activated warning device and curb extensions at the Ashland Avenue midblock crosswalk and "No Stopping" signage along the bus drop-off segment with bus loading hours. Update signage on the west side of Ashland Avenue to prevent parking during school hours.  
*Addresses Issue(s):* Priority 1, Collision 1
- P2** At the E. 14th Street/163rd Avenue intersection, add high-visibility ladder striping at all approaches and add a median refuge across the southeast approach.  
*Addresses Issue(s):* Priority 2
- P3** At the E.14th Street/162nd Avenue intersection, add truncated domes and update the signal heads to pedestrian-count down signal heads. Consider closing the driveway in the long-term.  
*Addresses Issue(s):* Priority 3
- P4** Along Ashland Avenue, remove parking and restripe to include bike lanes, one receiving lane, and left- and right-turn pockets. Add a northbound left turn phase to the signal and add a crosswalk along the west approach.  
*Addresses Issue(s):* Priority 4

#### GENERAL

- G1** Expand the school zone to include E. 14th Street between Ashland Avenue and 163rd Avenue. Add school zone signage and yellow school zone striping at all intersections.  
*Addresses Issue(s):* General 1
- G2** Connect existing parking lot walkways to the sidewalk along Ashland Avenue, relocate bicycle parking closer to the school entrance, add a northbound right turn lane along Ashland at the parking lot driveway, and extend red curb south of the driveway.  
*Addresses Issue(s):* General 2
- G3** Add "Staff Only" pavement markings to the driveway and place a movable sign in the inbound driveway lane that states "Staff/Disabled Parking Only - No Student Drop-Off or Pick-Up"  
*Addresses Issue(s):* General 3
- G4** Along E. 14th Street, between San Leandro Boulevard and Sorenson, implement Class II bicycle facilities, per the Alameda Multimodal Arterials Plan. Further, implement a Bicycle User Education Program.  
*Addresses Issue(s):* General 4, Collision 2



## LEGEND

- # Priority Recommendation
- # General Recommendation
- Sidewalk/Curb Extension
-  School Crossing Assembly & Pedestrian Activated Warning Device
-  Pedestrian Count-down Signal Heads
- Curb Ramp

