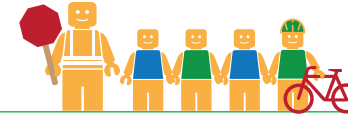


# EAST BAY ARTS HIGH SCHOOL

## ALAMEDA COUNTY UNINCORPORATED AREAS SAFE ROUTES TO SCHOOL PLAN



Public Works Agency  
Alameda County



### PROJECT OVERVIEW

East Bay Arts High School is located in Hayward, California, and is part of the San Lorenzo Unified School District. In 2016-17 there were 226 students enrolled at East Bay Arts High School. An on-site walk audit was conducted on Thursday afternoon, May 4th, 2017 with Principal Abigail Kotzin, Ryan McClain (F&P), and Teresa Peterson (F&P).



### KEY METRICS AT-A-GLANCE



**142 (127)**  
AM(PM) Peak Hour  
Pedestrians at Major  
Intersection Access



**5 (9)**  
AM(PM) Peak Hour  
Bicycles at Major  
Intersection Access



**Crossing  
Guard**  
None



**5**  
Pedestrian-involved  
collisions adjacent  
to school



**0**  
Bicycle-involved  
collisions adjacent  
to school

Reported Collisions 2009-2014



### ISSUES & CONCERNS

#### PRIORITY

- 1** Pedestrian access and safety at the Royal Avenue/Bartlett Avenue intersection
- 2** Vehicle speeds on Royal Avenue
- 3** Parents observed making unsafe maneuvers to pick-off/drop-off students

#### GENERAL

- 1** Pedestrian path-of-travel obstructions
- 2** Sidewalk gaps on West Sunset Boulevard

#### COLLISION HISTORY

- 1** Pedestrian-involved collisions due to vehicles not yielding to pedestrians
- 2** No bicycle collision reported adjacent to school. Bicycle collisions reported along Washington Avenue and Hesperian Boulevard



### PROJECT RECOMMENDATIONS

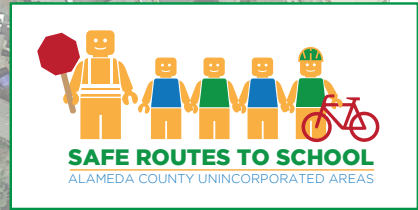
#### PRIORITY

- P1** Install crosswalks with high-visibility ladder striping and curb extensions at the Royal Avenue/Bartlett Avenue intersection.  
**Addresses Issue(s):** Priority 1
- P2** Traffic calming on Royal Avenue by narrowing travel lane.  
**Addresses Issue(s):** Priority 2
- P3** Remove the covered driveway entrance on Royal Avenue.  
**Addresses Issue(s):** Priority 3

#### GENERAL

- G1** As an onsite improvement, install a pedestrian walkway to connect the sidewalk with the northwestern-most parking lot.  
**Addresses Issue(s):** General 1
- G2** Close sidewalk gaps around the school  
**Addresses Issue(s):** General 2





**LEGEND**

- Priority Recommendation
- General Recommendation
- Sidewalk/Curb Extension
- Curb Ramp

