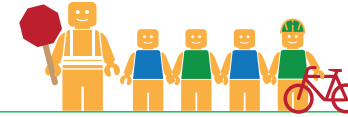


EAST AVENUE ELEMENTARY SCHOOL



Public Works Agency
Alameda County

ALAMEDA COUNTY UNINCORPORATED AREAS SAFE ROUTES TO SCHOOL PLAN

PROJECT OVERVIEW

East Avenue Elementary School is located in Hayward, California, and is part of the Hayward Unified School District. In 2016-17 there were 611 students enrolled at East Avenue Elementary School. An on-site walk audit was conducted on Tuesday afternoon, May 30th, 2017 with Principal Chris Modifer, Ryan McClain (F&P), Meghan Mitman (F&P), and Diwu Zhou (F&P).

KEY METRICS AT-A-GLANCE



103 (233)
AM(PM) Peak Hour
Pedestrians at Major
Intersection Access



0 (0)
AM(PM) Peak Hour
Bicycles at Major
Intersection Access



**Crossing
Guard**
East Avenue/
Hansen Road intersection



1
Pedestrian-involved
collisions adjacent
to school



0
Bicycle-involved
collisions adjacent
to school

Reported Collisions 2009-2014



ISSUES & CONCERNS

PRIORITY

- 1 Poor vehicle pick-up/drop-off circulation
- 2 Sidewalk gaps
- 3 Pedestrian visibility concerns on East Avenue

GENERAL

- 1 Unpainted curbs
- 2 Lack of bicycle facilities

COLLISION HISTORY

- 1 Pedestrian-involved collision due to pedestrian in road
- 2 No bicycle collisions reported

PROJECT RECOMMENDATIONS

PRIORITY

- P1** Improve vehicle circulation adding red curb/ no parking zones near the exiting driveway. Paint "Keep Clear" in front of driveway.
Addresses Issue(s): Priority 1, General 1, and Collision 1
- P2** Close the sidewalk gap on East Avenue between E Street and Hackamore Drive and on Hansen Road between East Avenue and Fairview Avenue
Addresses Issue(s): Priority 2, Priority 3
- P3** Crosswalk enhancements at the East Avenue/ Mead Way intersection
Addresses Issue(s): Priority 3

LEGEND

- Priority Recommendation
- General Recommendation
- Sidewalk/Curb Extension
- Red Curb
- School Crossing Assembly & Pedestrian Activated Warning Device
- Curb Ramp

