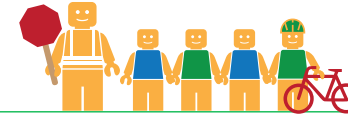


DEL REY ELEMENTARY SCHOOL

ALAMEDA COUNTY UNINCORPORATED AREAS SAFE ROUTES TO SCHOOL PLAN



Public Works Agency
Alameda County



PROJECT OVERVIEW

Del Rey Elementary School is located in San Lorenzo, California, and is part of the San Lorenzo Unified School District. In 2016-17 there were 527 students enrolled at Del Rey Elementary School. An on-site walk audit was conducted on Tuesday afternoon, May 9th, 2017 with Principal Don Carpenter, Ryan McClain (F&P), and Teresa Peterson (F&P).



KEY METRICS AT-A-GLANCE



180 (216)
AM(PM) Peak Hour
Pedestrians at Major
Intersection Access



1 (7)
AM(PM) Peak Hour
Bicycles at Major
Intersection Access



Crossing Guard
Bockman Road/
Via Del Rey intersection



1
Pedestrian-involved
collisions adjacent
to school



0
Bicycle-involved
collisions adjacent
to school

Reported Collisions 2009-2014



ISSUES & CONCERNS

PRIORITY

- 1** Drop-off/pick-up loop congestion
- 2** Illegal use of exit-only driveway on Via Mesa as entrance
- 3** Pedestrian access and safety at the Bockman Road/Channel Street intersection

GENERAL

- 1** Pedestrian visibility concerns

COLLISION HISTORY

- 1** Pedestrian-involved collision at intersection
- 2** No bicycle collision reported adjacent to school. Bicycle collisions reported along Washington Avenue and Hesperian Boulevard



PROJECT RECOMMENDATIONS


PRIORITY

- P1** Reverse passenger loading zone to enter from via Mesa and to exit at Via del Rey travel clockwise. Move bus pick-up to Via Sonya.
Addresses Issue(s): Priority 1 & 2
- P2** Enlarge and raise the southbound median at the Channel Street/Bockman Road intersection. As a long-term improvement, square up both side streets and create two separate intersections; keep the eastern intersection all-way stop controlled.
Addresses Issue(s): Priority 3
- P3** Add high-visibility ladder striping to the Via Mesa midblock crosswalk and convert the unused bus stop to a passenger loading zone.
Addresses Issue(s): General 1

GENERAL

- G1** Install curb extensions and paint crosswalks at the Via Del Rey/Via Son intersection.
Addresses Issue(s): General 1
- G2** Paint high-visibility crosswalk across the southbound approach at the Via Mesa/Via Melina intersection.
Addresses Issue(s): General 1

LEGEND

- # Priority Recommendation
- # General Recommendation
- Sidewalk/Curb Extension
- White Curb
-  School Crossing Assembly & Pedestrian Activated Warning Device
- Curb Ramp



FEHR PEERS

* Improvement is shown on separate graphic