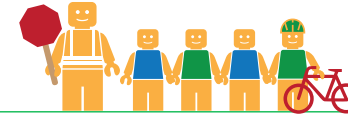


CREEKSIDE MIDDLE SCHOOL

ALAMEDA COUNTY UNINCORPORATED AREAS SAFE ROUTES TO SCHOOL PLAN



Public Works Agency
Alameda County



PROJECT OVERVIEW

Creekside Middle School is located in Castro Valley, California, and is part of the Castro Valley Unified School District. In 2016-17 there were 764 students enrolled at Creekside Middle School. An on-site walk audit was conducted on Wednesday afternoon, May 3rd, 2017 with Principal Jaliza Eagles, Dorothea Beringer (parent), Bruce Dughi (parent), Patrick Gilster (F&P), Clara Wong (F&P), and Carol Levine (Spokemore).



KEY METRICS AT-A-GLANCE



57 (192)
AM(PM) Peak Hour
Pedestrians at Major
Intersection Access



4 (4)
AM(PM) Peak Hour
Bicycles at Major
Intersection Access



Crossing Guard
Center Street/
Omega Avenue
intersection



Measure G
Planned School
Funding



0
Pedestrian-involved
collisions adjacent
to school



1
Bicycle-involved
collisions adjacent
to school

Reported Collisions 2009-2014



ISSUES & CONCERNS

PRIORITY

- 1 Pedestrian visibility concerns at the Gem Avenue/Sapphire Street intersection
- 2 Poor vehicle pick-up/drop-off circulation

GENERAL

- 1 Pedestrian access at the Center Street/Circle Avenue intersection
- 2 Sidewalk gaps on Paradise Knolls

COLLISION HISTORY

- 1 No pedestrian collisions reported
- 2 Bicycle collisions reported along Redwood Road and Castro Valley Boulevard



PROJECT RECOMMENDATIONS

PRIORITY

- P1 Construct curb extensions and paint high visibility crosswalks along all approaches at Gem/Sapphire Street. Install pedestrian crossing signs.
Addresses Issue(s): Priority 1






- P2 Restrict parking on Center Street between Paradise Knolls and Circle Avenue by time of day.
Addresses Issue(s): Priority 2

GENERAL

- G1 Install a pedestrian scramble phase at the Center Street/Circle Avenue intersection.
Addresses Issue(s): General 1
- G2 Close the sidewalk gap along Paradise Knolls.
Addresses Issue(s): General 2
- G3 Stripe a white loading zone on the south side of Paradise Knolls adjacent to the school.
Addresses Issue(s): Priority 2

LEGEND

- # Priority Recommendation
- # General Recommendation
- Sidewalk/Curb Extension
- Red Curb
- White Curb
-  School Crossing Assembly
-  Pedestrian Scramble
-  Curb Ramp

