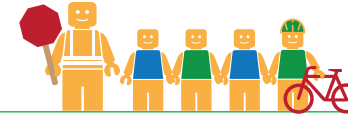


CHERRYLAND ELEMENTARY SCHOOL

ALAMEDA COUNTY UNINCORPORATED AREAS SAFE ROUTES TO SCHOOL PLAN



Public Works Agency
Alameda County



PROJECT OVERVIEW

Cherryland Elementary School is located in Hayward, California, and is part of the Hayward Unified School District. In 2016-17 there were 788 students enrolled at Cherryland Elementary School. An on-site walk audit was conducted on Tuesday morning, May 30th, 2017 with the Principal, Vice Principal, Patrick Gilster (F&P), Carrie Modi (F&P), and Natalie Chyba (F&P).



KEY METRICS AT-A-GLANCE



118 (91)
AM(PM) Peak Hour
Pedestrians at Major
Intersection Access



No Data Available
AM(PM) Peak Hour
Bicycles at Major
Intersection Access



Crossing Guard
Sunset Boulevard/
Western Boulevard intersection



1
Pedestrian-involved
collisions adjacent
to school



1
Bicycle-involved
collisions adjacent
to school

Reported Collisions 2009-2014



ISSUES & CONCERNS

PRIORITY

- 1 Crosswalk design and pedestrian visibility concerns
- 2 Poor curb delineation

GENERAL

- 1 Lack of pedestrian facilities along Sunset Avenue
- 2 Lack of traffic control along Sunset Avenue and Western Boulevard
- 3 School zone classification

COLLISION HISTORY

- 1 Pedestrian-involved collision due to vehicle not yielding to pedestrian in crosswalk
- 2 Bicycle collisions reported along Castro Valley Blvd, E. 14th St, A Street, D Street, Grove Way, Hesperian Blvd, Redwood Rd, Road 92, Somerset Ave, Stanton Ave, and Winton Ave



PROJECT RECOMMENDATIONS

PRIORITY

- P1** At the Willow Court/Willow Avenue intersection, extend the red curb on the south side of Willow Avenue and add painted curb extensions to shorten the crossing distance. At the Willow Avenue/Western Boulevard intersection, add red curb along the southbound approach.
Addresses Issue(s): Priority 1
- P2** Extend white curb to delineate the loading zone and match existing signage along Western Avenue.
Addresses Issue(s): Priority 2

GENERAL

- G1** Consider installing a midblock crosswalk between Princeton and Western along Sunset Blvd, as there is a long distance between those two crossings.
Addresses Issue(s): General 1
- G2** Paint parallel line crosswalk markings to the existing crosswalks. The existing crosswalk treatment is not very visibility to oncoming vehicles.
Addresses Issue(s): General 1
- G3** Consider installing chicanes as a traffic calming measure along Sunset Blvd between Meekland and Western and coordinate with the City of Hayward to determine appropriate traffic calming measures along Western Boulevard south of Sunset Avenue.
Addresses Issue(s): General 2
- G4** Classify the area surrounding the new school site as a School Zone and install relevant signage and pavement markings.
Addresses Issue(s): General 3

LEGEND

- # Priority Recommendation
- # General Recommendation
- Painted Curb Extension
- Red Curb
- White Curb
- Curb Ramp



CHERRYLAND
ELEMENTARY
SCHOOL

Willow Ct

Willow Ave

Western Blvd

Sunset Blvd

Princeton St

100'
0' 200'
Improvements not to scale

FEHR PEERS