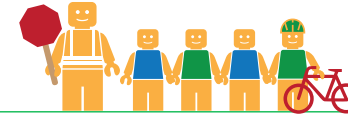


# CHABOT ELEMENTARY SCHOOL

## ALAMEDA COUNTY UNINCORPORATED AREAS SAFE ROUTES TO SCHOOL PLAN



Public Works Agency  
Alameda County



### PROJECT OVERVIEW

Chabot Elementary School is located in Castro Valley, California, and is part of the Castro Valley Unified School District. In 2016-17 there were 469 students enrolled at Chabot Elementary School. An on-site walk audit was conducted on Tuesday morning, April 25th, 2017 with Principal Vivienne Paratore, Jennifer Hanson (parent), Paul J. Keener (ACPPWA), Ryan McClain (F&P), Carrie Modi (F&P), and Natalie Chyba (F&P).



### KEY METRICS AT-A-GLANCE



**41 (40)**  
AM(PM) Peak Hour  
Pedestrians at Major  
Intersection Access



**13 (10)**  
AM(PM) Peak Hour  
Bicycles at Major  
Intersection Access



**Crossing  
Guard**  
Lake Chabot Road/  
Christensen Lane  
Intersection



**Measure G**  
Planned School  
Funding



**1**  
Pedestrian-involved  
collisions adjacent  
to school



**1**  
Bicycle-involved  
collisions adjacent  
to school

Reported Collisions 2009-2014



### ISSUES & CONCERNS

#### PRIORITY

- 1** Parking lot access and circulation
- 2** Poor crosswalk visibility and long crossing distance at the Keith Avenue/Lake Chabot Road intersection
- 3** Poor loading zone utilization and improper use along Christensen Lane

#### GENERAL

- 1** Sidewalk gap at school driveway on Lake Chabot Road

#### COLLISION HISTORY

- 1** Pedestrian-involved collisions due to vehicles not yielding to pedestrians in crosswalk
- 2** Bicycle collision along Christensen Lane



### PROJECT RECOMMENDATIONS

#### PRIORITY




- P1** Loading Zone Education Program and restriction of left turns into/out of the parking lot.  
**Addresses Issue(s):** Priority 1
- P2** Lake Chabot Road Diet extension, median pedestrian refuge, and pedestrian activated warning device at Lake Chabot Road and Keith Avenue.  
**Addresses Issue(s):** Priority 2, Collision 1
- P3** Implement an education program for the Christensen Lane pick-up/drop-off zone to minimize double parking/improper use of loading zone and delineate the curb to highlight the bus-only zone.  
**Addresses Issue(s):** Priority 3

#### GENERAL

- G1** Parking lot sidewalk gap closure to improve pedestrian access into the school.  
**Addresses Issue(s):** General 1
- G2** Bicycle User Education Program  
**Addresses Issue(s):** Collision 2

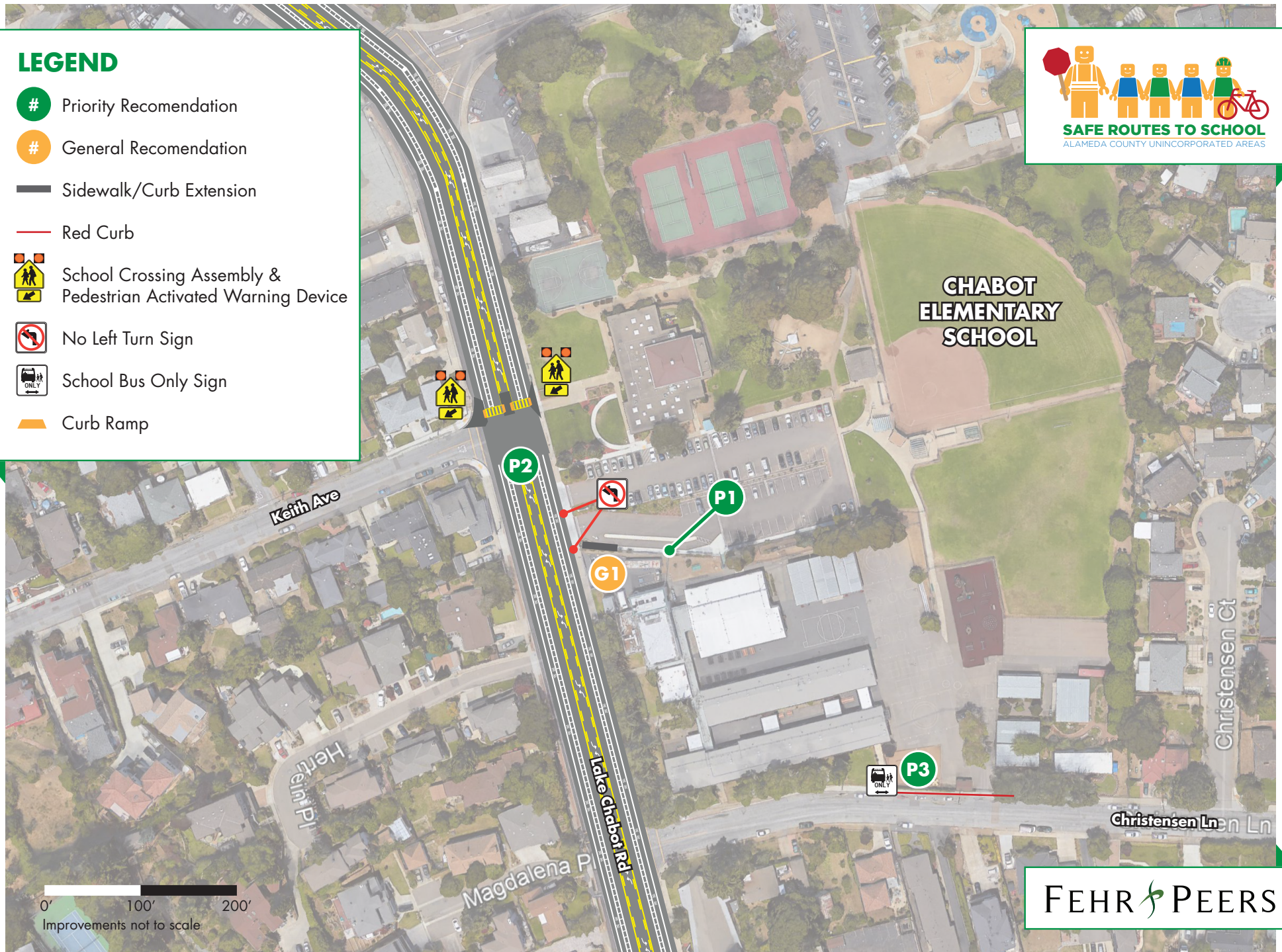


## LEGEND

- # Priority Recommendation
- # General Recommendation
- Sidewalk/Curb Extension
- Red Curb
-  School Crossing Assembly & Pedestrian Activated Warning Device
-  No Left Turn Sign
-  School Bus Only Sign
- Curb Ramp



**CHABOT  
ELEMENTARY  
SCHOOL**



**FEHR PEERS**