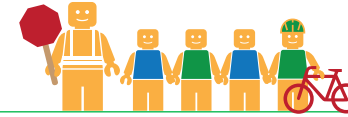


# CASTRO VALLEY HIGH SCHOOL

## ALAMEDA COUNTY UNINCORPORATED AREAS SAFE ROUTES TO SCHOOL PLAN



Public Works Agency  
Alameda County

### PROJECT OVERVIEW

Castro Valley High School is located in Castro Valley, California, and is part of the Castro Valley Unified School District. In 2016-17 there were 2920 students enrolled at Castro Valley High School. An on-site walk audit was conducted on Wednesday morning, May 31st, 2017 with Principal Blaine Torpey, Paul J. Keener (ACPWA), Patrick Gilster (F&P), Clara Wong (F&P), and Carol Levine (Spokemore).

### KEY METRICS AT-A-GLANCE



**251 (319)**  
AM(PM) Peak Hour  
Pedestrians at Major  
Intersection Access



**14 (6)**  
AM(PM) Peak Hour  
Bicycles at Major  
Intersection Access



**Crossing  
Guard**  
None



**Measure G**  
Planned School  
Funding



**9**  
Pedestrian-involved  
collisions adjacent  
to school



**6**  
Bicycle-involved  
collisions adjacent  
to school

Reported Collisions 2009-2014



### ISSUES & CONCERNS

#### PRIORITY

- 1** Pedestrian safety at the Santa Maria Avenue/Lux Avenue intersection
- 2** Pedestrian visibility at the Redwood Road/Mabel Avenue intersection
- 3** Poor vehicle pick-up/drop-off circulation

#### GENERAL

- 1** Blocked intersection due to vehicle queuing at the Redwood Road/Heyer Avenue intersection
- 2** Bicycle navigation through student parking lot
- 3** Difficulties with ADA drop-off zone
- 4** Sidewalk gaps

#### COLLISION HISTORY

- 1** Pedestrian-involved collisions due to vehicles not yielding to pedestrians in crosswalks
- 2** Bicycle collisions reported along Redwood Road, Castro Valley Boulevard, and Somerset Avenue

### PROJECT RECOMMENDATIONS

#### PRIORITY

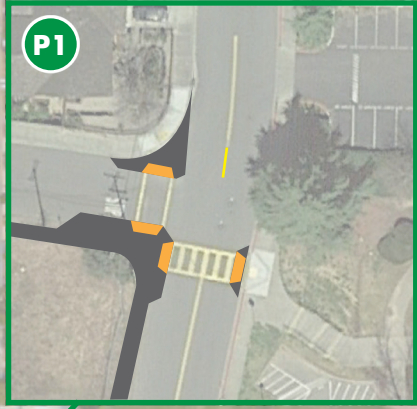
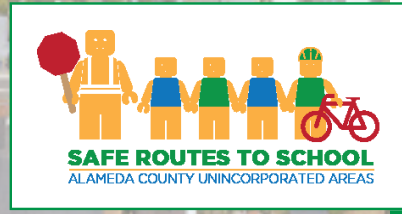
- P1** Intersection improvements at the Lux Avenue/Santa Maria Avenue intersection. Construct curb extensions and sidewalks along the vacant lot.  
**Addresses Issue(s):** Priority 1
- P2** Install a pedestrian scramble phase at the Redwood Road/Mabel Avenue intersection.  
**Addresses Issue(s):** Priority 2, Collision 1
- P3** Develop a wayfinding program and traffic control plan.  
**Addresses Issue(s):** Priority 3

#### GENERAL

- G1** Install "DO NOT BLOCK INTERSECTION" (MUTCD R10-7) signage at the north- and westbound approaches.  
**Addresses Issue(s):** General 1
- G2** Add additional bike, skateboard, and scooter parking onsite.  
**Addresses Issue(s):** General 2
- G3** Create a ADA van accessible loading zone in the west parking lot.  
**Addresses Issue(s):** General 3
- G4** Close the sidewalk gap on Heyer Avenue.  
**Addresses Issue(s):** General 4
- G5** Close the sidewalk gap on Mabel Avenue.  
**Addresses Issue(s):** General 4

# LEGEND

- Priority Recommendation
- General Recommendation
- Sidewalk/Curb Extension
- School Bus Only Sign
- Do Not Block Intersection Sign
- Pedestrian Scramble
- Curb Ramp



**CASTRO VALLEY HIGH SCHOOL**



100'  
0' 200'  
Improvements not to scale

