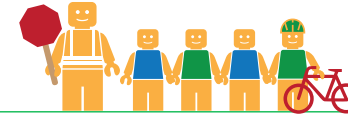


CASTRO VALLEY ELEMENTARY SCHOOL

ALAMEDA COUNTY UNINCORPORATED AREAS SAFE ROUTES TO SCHOOL PLAN



Public Works Agency
Alameda County



PROJECT OVERVIEW

Castro Valley Elementary School is located in Castro Valley, California, and is part of the Castro Valley Unified School District. In 2016-17 there were 478 students enrolled at Castro Valley Elementary School. An on-site walk audit was conducted on Tuesday morning, May 9th, 2017 with Principal Affie Sklut, faculty member Penny Vance, Sergio Nunez (parent), Erin Joelsson (parent), Katrina Reid (parent), Paul J. Keener (ACPWA), Patrick Gilster (F&P), Clara Wong (F&P), and Carol Levine (Spokemore).



KEY METRICS AT-A-GLANCE



199 (243)
AM(PM) Peak Hour
Pedestrians at Major
Intersection Access



3 (5)
AM(PM) Peak Hour
Bicycles at Major
Intersection Access



Crossing Guard
Castro Valley Boulevard/
San Miguel Avenue
intersection



Measure G
Planned School
Funding

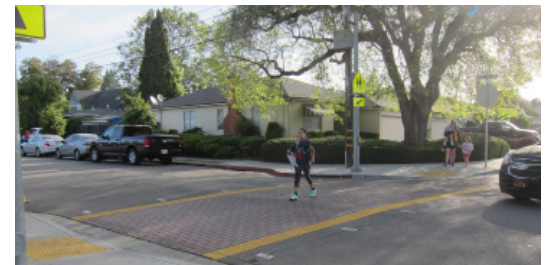


5
Pedestrian-involved
collisions adjacent
to school



6
Bicycle-involved
collisions adjacent
to school

Reported Collisions 2009-2014



ISSUES & CONCERNS

PRIORITY

- 1 Pedestrian accessibility and safety at the San Miguel Avenue/Jeanine Way intersection
- 2 High vehicle speeds on San Miguel Avenue
- 3 Lack of enforcement for parking and traffic violations

GENERAL

- 1 Pedestrian visibility and safety on Anita Avenue
- 2 Poor vehicle pick-up/drop-off circulation
- 3 Sidewalk gaps on Anita Avenue

COLLISION HISTORY

- 1 Pedestrian-involved collisions due to pedestrians not utilizing crosswalks
- 2 Bicycle collisions reported along Redwood Road, Castro Valley Boulevard, and Somerset Avenue



PROJECT RECOMMENDATIONS

PRIORITY

- P1** Hire a crossing guard at San Miguel Avenue/Jeanine Way. Paint a high visibility crosswalk on top of the existing decorative crosswalks.
Addresses Issue(s): Priority 1
- P2** Install traffic calming chokers on San Miguel Avenue. Install signs that warn visually impaired students.
Addresses Issue(s): Priority 1, Priority 2
- P3** Increased enforcement of parking and traffic violations.
Addresses Issue(s): Priority 2, Priority 3

GENERAL

- G1** Install curb extensions at the rear school entrance.
Addresses Issue(s): General 1
- G2** Identify alternative drop-off areas and parking locations for parents who wish to walk their children to school.
Addresses Issue(s): General 2
- G3** Alter the signal timings at the Castro Valley Boulevard/San Miguel Avenue intersection during the afternoon pick-up period to relieve queues on San Miguel Avenue.
Addresses Issue(s): General 2
- G4** Close the sidewalk gap along Anita Avenue.
Addresses Issue(s): General 3
- G5** Trim trees and foliage that currently block street signs.
Addresses Issue(s): General 3

LEGEND

- Priority Recommendation
- General Recommendation
- Curb Extension/Choker
- Deaf Children Near Sign
- Curb Ramp
- Crossing Guard

