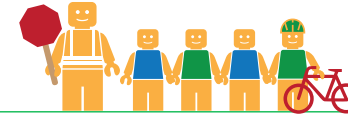


CANYON MIDDLE SCHOOL

ALAMEDA COUNTY UNINCORPORATED AREAS SAFE ROUTES TO SCHOOL PLAN



Public Works Agency
Alameda County



PROJECT OVERVIEW

Canyon Middle School is located in Castro Valley, California, and is part of the Castro Valley Unified School District. In 2016-17 there were 1436 students enrolled at Canyon Middle School. An on-site walk audit was conducted on Tuesday afternoon, May 16th, 2017 with Principal Matthew Steinecke, Patrick Gilster (F&P), Clara Wong (F&P), and Carol Levine (Spokemore).



KEY METRICS AT-A-GLANCE



44 (291)
AM(PM) Peak Hour
Pedestrians at Major
Intersection Access



1 (5)
AM(PM) Peak Hour
Bicycles at Major
Intersection Access



**Crossing
Guard**
None



Measure G
Planned School
Funding



1
Pedestrian-involved
collisions adjacent
to school



2
Bicycle-involved
collisions adjacent
to school

Reported Collisions 2009-2014



ISSUES & CONCERNS

PRIORITY

- 1** Pedestrian safety and accessibility at the Cull Canyon Road/Heyer Avenue intersection
- 2** Poor vehicle pick-up/drop-off circulation in parking lot
- 3** Pedestrian visibility and safety at school entrance crosswalk

GENERAL

- 1** Sidewalk gap to Fire Trail

COLLISION HISTORY

- 1** Pedestrian-involved collision in crosswalk at intersection
- 2** Bicycle collisions reported along Redwood Road and Castro Valley Boulevard



PROJECT RECOMMENDATIONS

PRIORITY

- P1** Construct a dedicated southbound right-turn lane and a bicycle transition zone at the Cull Canyon Road/Heyer Avenue intersection. Tighten the curb radii on the southwest and northwest corners. Update signal phasing and provide leading pedestrian intervals.
Addresses Issue(s): Priority 1
- P2** As an onsite improvement, install curbs, sidewalks, and a raised crosswalk in the parking lot and restripe parking stalls.
Addresses Issue(s): Priority 2
- P3** As onsite improvements, develop a Traffic Control Plan, and add signage and wayfinding near the school entrance.
Addresses Issue(s): Priority 3

GENERAL

- G1** On-site Improvements - Sidewalk gap closure on Heyer Avenue in front of the teacher parking lot; connect to the Fire Trail
Addresses Issue(s): General 1

LEGEND

- # Priority Recommendation
- # General Recommendation
- Recommended Sidewalk
- Curb Ramp



CANYON
MIDDLE
SCHOOL

Heyer Ave

P2

Heyer Ave

G1

Heyer Ave

P1

Gull Canyon Rd

Crow Canyon Rd

0' 100' 200'
Improvements not to scale

FEHR PEERS