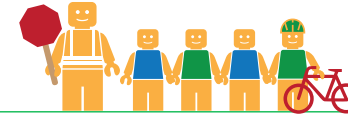


# BOHANNON MIDDLE SCHOOL

## ALAMEDA COUNTY UNINCORPORATED AREAS SAFE ROUTES TO SCHOOL PLAN



Public Works Agency  
Alameda County

### PROJECT OVERVIEW

Bohannon Middle School is located in San Lorenzo, California, and is part of the San Lorenzo Unified School District. In 2016-17 there were 854 students enrolled at Bohannon Middle School. An on-site walk audit was conducted on Monday morning, May 8th, 2017 with Vice Principal Waylon Miller, Patrick Gilster (F&P), and Teresa Peterson (F&P).

### KEY METRICS AT-A-GLANCE



**161 (291)**  
AM(PM) Peak Hour  
Pedestrians at Major  
Intersection Access



**13 (12)**  
AM(PM) Peak Hour  
Bicycles at Major  
Intersection Access



**Crossing  
Guard**  
Bockman Road/  
Via Media intersection

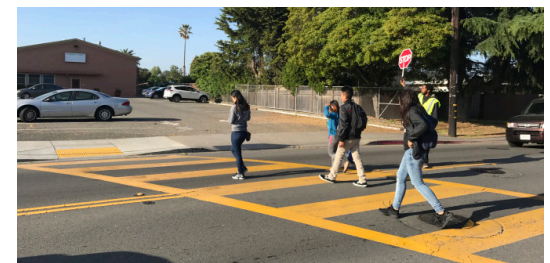


**4**  
Pedestrian-involved  
collisions adjacent  
to school



**4**  
Bicycle-involved  
collisions adjacent  
to school

Reported Collisions 2009-2014



### ISSUES & CONCERNS

#### PRIORITY

- 1** Pedestrian circulation and safety at the Hesperian Boulevard/Bockman Road intersection
- 2** Pedestrian accessibility and safety
- 3** No designated right-of-way for pedestrians/bicycles to campus

#### GENERAL

- 1** Parents do not follow specified drop-off protocol
- 2** Poor utilization of school frontage curb space
- 3** Sidewalk gaps on Bockman Road

#### COLLISION HISTORY

- 1** Pedestrian-involved collisions due to vehicles not yielding to pedestrians in crosswalks
- 2** Bicycle collisions reported along Washington Avenue and Hesperian Boulevard

### PROJECT RECOMMENDATIONS

#### PRIORITY


- P1** Add northbound crosswalk at the Hesperian Boulevard/Bockman Road intersection and change left-turn phasing at intersection from Permissive to Protected  
**Addresses Issue(s):** Priority 1
- P2** Install high-visibility ladder striped crosswalks and curb extensions at the Via Arriba/Bockman Road intersection.  
**Addresses Issue(s):** Priority 2
- P3** As an onsite improvement, reconfigure the parking lot to create a formal loading zone near school entrance and construct a walkway on the west side of the drive aisle.  
**Addresses Issue(s):** Priority 3, General 1

#### GENERAL

- G1** Designate curb space on school frontage as a passenger loading zone and remove unused bus stop.  
**Addresses Issue(s):** General 2
- G2** Close the sidewalk gap on Bockman Road between the school and Via Arriba.  
**Addresses Issue(s):** General 3
- G3** Educate parents about additional school entrances into the school.  
**Addresses Issue(s):** General 1
- G4** Intersection improvements at the Bockman Rd/Via Media intersection.  
**Addresses Issue(s):** General 2



## LEGEND

- # Priority Recommendation
- # General Recommendation
- Sidewalk/Curb Extension
- White Curb
-  School Crossing Assembly & Pedestrian Activated Warning Device
- Curb Ramp

