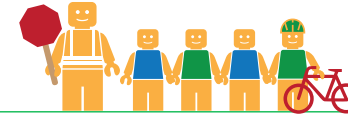


# ARROYO HIGH SCHOOL

## ALAMEDA COUNTY UNINCORPORATED AREAS SAFE ROUTES TO SCHOOL PLAN



Public Works Agency  
Alameda County

### PROJECT OVERVIEW

Arroyo High School is located in San Lorenzo, California, and is part of the San Lorenzo Unified School District. In 2016-17 there were 1780 students enrolled at Arroyo High School. An on-site walk audit was conducted on Monday morning, May 15th, 2017 with Vice Principal Sterling Bruner, Paul J. Kenner (ACPWA), Patrick Gilster (F&P), and Teresa Peterson (F&P).

### KEY METRICS AT-A-GLANCE



**204 (421)**  
AM(PM) Peak Hour  
Pedestrians at Major  
Intersection Access



**5 (3)**  
AM(PM) Peak Hour  
Bicycles at Major  
Intersection Access



**Crossing  
Guard**  
None



**2**  
Pedestrian-involved  
collisions adjacent  
to school



**2**  
Bicycle-involved  
collisions adjacent  
to school

Reported Collisions 2009-2014



### ISSUES & CONCERNS

#### PRIORITY

- 1** Pedestrian accessibility and safety at the Lorenzo Avenue/Via Enrico intersection
- 2** Poor vehicle pick-up/drop-off circulation
- 3** Pedestrian circulation and safety at the Grant Avenue/Washington Avenue intersection

#### GENERAL

- 1** Sidewalk gaps
- 2** Lack of bicycle facilities
- 3** Pedestrian midblock crossings along Lorenzo Avenue

#### COLLISION HISTORY

- 1** Pedestrian-involved collisions due to pedestrian not utilizing crosswalks
- 2** Bicycle collisions reported along Washington Avenue and Hesperian Boulevard

### PROJECT RECOMMENDATIONS

#### PRIORITY

- P1** Construct curb extensions and paint a crosswalk on the westbound approach at the Lorenzo Avenue/Via Enrico intersection.  
**Addresses Issue(s):** Priority 1
- P2** Circulation Improvements - Stripe crosswalks across driveways with "Yield to Pedestrians" signage. Install new signage to discourage left turns out of driveways and designate entrance/exit driveways.  
**Addresses Issue(s):** Priority 2
- P3** In the near term, stripe westbound crosswalk and remove the eastbound right-turn pocket (see General 2) at the Grant Avenue/Washington Avenue intersection. As a long term recommendation, remove slip lanes and increase curb space.  
**Addresses Issue(s):** Priority 3

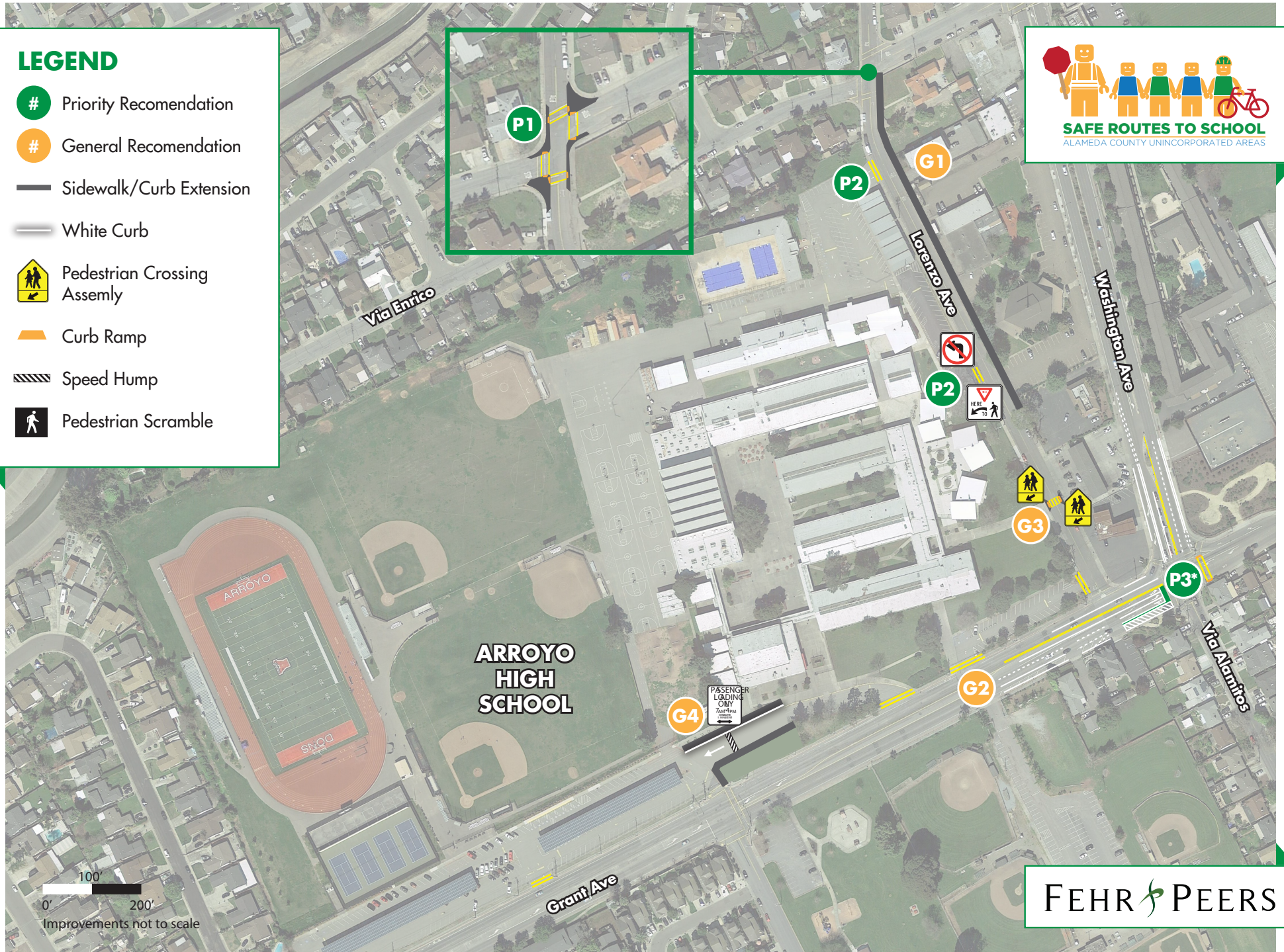
#### GENERAL

- G1** Close the sidewalk gap on Lorenzo Avenue between Grant Avenue and Via Enrico.  
**Addresses Issue(s):** General 1
- G2** Close the bicycle route gap by connecting bicycle lanes on Grant Avenue and Washington Avenue.  
**Addresses Issue(s):** General 2, Collision 2
- G3** Install a midblock crosswalk on Lorenzo Avenue between Grant Avenue and Via Enrico.  
**Addresses Issue(s):** General 3, Collision 1
- G4** On Site Improvement - School bus loading zone reconfiguration  
**Addresses Issue(s):** Priority 2



## LEGEND

- # Priority Recommendation
- # General Recommendation
- Sidewalk/Curb Extension
- White Curb
- Pedestrian Crossing Assembly
- Curb Ramp
- Speed Hump
- Pedestrian Scramble



FEHR PEERS

\* Long-term Improvement is shown on separate graphic