



School Safety Assessment Technical Memorandum

Community United Elementary School

Futures Elementary School

Oakland Unified School District

March 2018



The Alameda County Safe Routes to Schools Program is funded by the Alameda County Transportation Commission. Your transportation dollars at work!

COMMUNITY UNITED ELEMENTARY SCHOOL

FUTURES ELEMENTARY SCHOOL

A school safety assessment was conducted at Community United Elementary School & Futures Elementary School in Oakland during the morning arrival on March 27, 2018. The assessment was attended by representatives from the City of Oakland, Alameda County Safe Routes to Schools staff and Community United Elementary School staff.

Participants included:

- Dara O'Byrne, Alameda County SR2S planner
- Beth Martin, Alameda County SR2S planner
- Nick Bleich, Alameda County SR2S engineer
- Isa Gaillard, Alameda County SR2S site coordinator
- Beaver Boonsook, City of Oakland engineer
- Community United Elementary School staff

School Information

Address	6701 International Blvd, Oakland, CA 94621
Morning Bell(s)	8:10 am
Afternoon Bell(s)	2:55 pm (Wed: 1:25 pm)
Grade Levels	K - 5
Enrollment	388
Student Travel Mode Info (Percentage of students)	SR2S Hand Tallies (Spring 2017): Walking: 44% Biking: 0% School bus: 2% Family Vehicle: 40% Carpool: 10% Transit: 3% Other: 1%
Does the school have bike racks? What is the capacity? Is it secure bike parking? On a typical day, what percentage of racks are used?	There are 10 inverted u-racks next to parking lot. Bike racks were around 20% full on the day of the assessment.
How do school and transit buses interact with the school?	Bus Rapid Transit is under construction on International Boulevard and will have stops between 65 th Avenue and 66 th Avenue and between 71 st Avenue and 72 nd Avenue. AC Transit is currently operational, and students often use the two bus stops on International Boulevard between 66 th Avenue and 69 th Avenue. Oakland Unified provides buses

	for special education students that drops off along the International Boulevard frontage.
Does the school have special pick-up/drop-off policies/procedures?	Families can drop off students using the staff parking lot; the gate to the lot is locked at 8:20 AM. Families in vehicles are encouraged to use 69 th Avenue for pickup and drop-off.

Community United & Futures Elementary Schools are located on a large joint school site on International Boulevard between 66th Avenue and 69th Avenue. The shared campus includes Community United Elementary, Coliseum College Prep Academy, Futures Elementary School, and Roots International Academy. Community United is located in the southwest corner of the site, near the Martin Luther King, Jr. Branch of the Oakland Public Library. Most families driving drop off students on 69th Avenue and students enter the school yard through a gate on 69th Avenue. Families are also allowed to drop of students in a staff parking lot accessible from International Boulevard.

International Boulevard is served by AC Transit line 1, 356, and 801, with stops located at the intersection with 66th Avenue and 69th Avenue in both directions. AC Transit is currently constructing Bus Rapid Transit (BRT) on International Boulevard in front of Community United Elementary.

Between 2012 and 2017, there were 15 pedestrian collisions and 6 bicycle collisions within a quarter mile of Community United Elementary and Futures Elementary. Within a half mile, there were 65 pedestrian and 28 bicycle collisions. Most of these collisions occurred on International Boulevard.

Existing Conditions

Participants observed and reported the following existing conditions during the school safety assessment (SSA).

1. International Boulevard / Havenscourt Boulevard

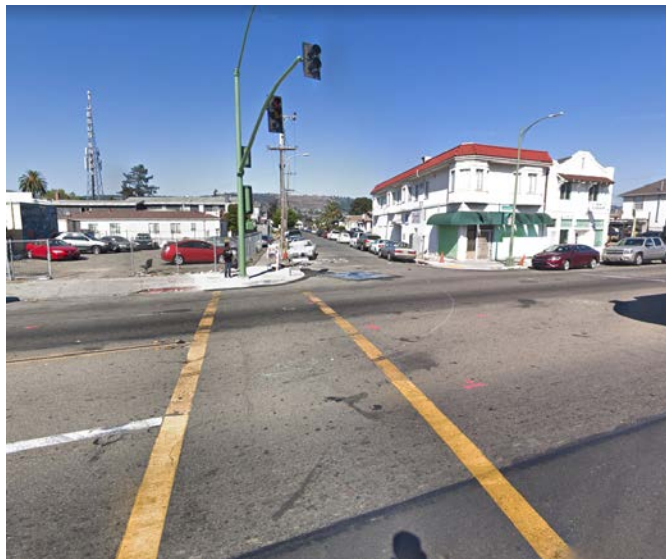
- ◆ The signalized International Boulevard / Havenscourt Boulevard intersection has permissive left turn phasing coming from Havenscourt Boulevard.
- ◆ There are two crossing guards serving the marked crosswalk at International Boulevard and Havenscourt Boulevard, one posted on each side of International. During the observation the crossing guards were effective at increasing the visibility of pedestrians, especially for cars traveling southbound on Havenscourt Boulevard and turning left onto International Boulevard.



Two crossing guards help facilitate the crossing of International Boulevard at Havenscourt Boulevard.

2. International Boulevard / 67th Avenue

- ◆ The new pedestrian signal at International Boulevard and 67th Avenue is not yet operational. SSA participants observed students and families using the crossing at this intersection, many of them running or walking quickly to avoid oncoming traffic.



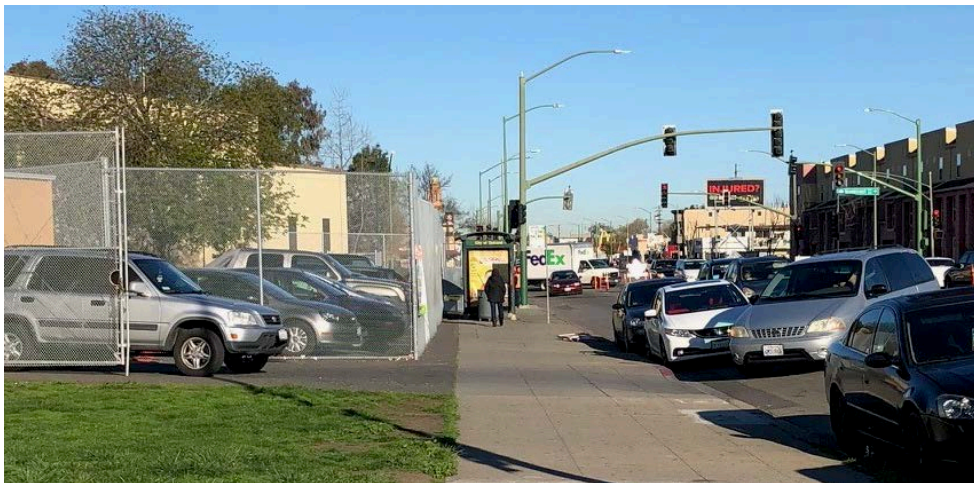
Pedestrian signal at International Boulevard and 67th Boulevard is not functional during the East Bay BRT construction period.

3. International Boulevard School Frontage

- ◆ SSA participants observed several vehicles using the curbside to drop off students on International Boulevard.
- ◆ In either direction, there is no school assembly signage on International Boulevard to alert vehicles that they are driving near a school.

4. Staff Parking Lot on International Boulevard

- ◆ SSA participants observed some families using the staff parking lot accessed from International Boulevard to drop off children. The school allows parents to drop off students in the parking lot but encourages parents to drop off on 69th Avenue. The school staff reported that in the past they encouraged the parking lot as the drop-off loop, but there was conflict between vehicles dropping off students and staff trying to park. The school locks the gates to the parking lot after the start of school at 8:20am to discourage parents parking or waiting in the parking lot.
- ◆ SSA participants noted that the drop off in the parking lot works efficiently, and parents wait to get to the drop-off curb.
- ◆ The curb cut for the entrance and exit to the parking lot is narrow, and cars often had to wait to enter or exit for the vehicle traveling in the opposite direction.
- ◆ There is currently only a five-foot red curb on either side of the curb cut and the parked cars reduced visibility of cars turning into the lot and of pedestrians crossing on the sidewalk.



Cars entering and exiting parking lot often have to wait for one another.



The short distance of red curb, paired with cars parking in the red curb, reduces visibility of vehicles turning into the parking lot.

5. International Boulevard / 69th Avenue

- ◆ The intersection currently has transverse crosswalks at each approach. Many pedestrians were observed crossing International Boulevard at 69th Avenue during the morning school commute. International Boulevard has a 70-foot crossing distance at this location, and families were observed crossing near the end of the countdown when the red hand was already flashing. The pedestrian signal heads have no countdown.

6. 69th Avenue / Herbert Guice Way

- ◆ The unsignalized intersection of 69th Avenue and Herbert Guice Way is a one-way stop controlled on the northbound Herbert Guice approach. There are marked transverse crosswalks on the south and west legs and there is a crossing guard facilitating crossings.
- ◆ SSA participants observed that cars from each direction would yield but would not completely stop when children were in the crosswalk. Cars would nose forward into the crosswalk to try to go straight or turn at the intersection.



Crossing guard stationed at the intersection of 69th Avenue and Herbert Guice Way.

7. 69th Avenue School Frontage

- ◆ 69th Avenue is a narrow street with parking on both sides. During the school drop-off time, the high volume of cars and congested roadway kept vehicle speeds relatively slow.
- ◆ The sidewalks along the school frontage have a high pedestrian volume, with many families walking as well as use by vendors selling food from small carts.
- ◆ SSA participants observed vehicles parking along the school frontage curb. Some cars were parked on the sidewalk, or parked diagonally across the sidewalk (see photo below), particularly in front of the early childhood center.



Cars park partly on the sidewalk, or diagonally across the sidewalk.



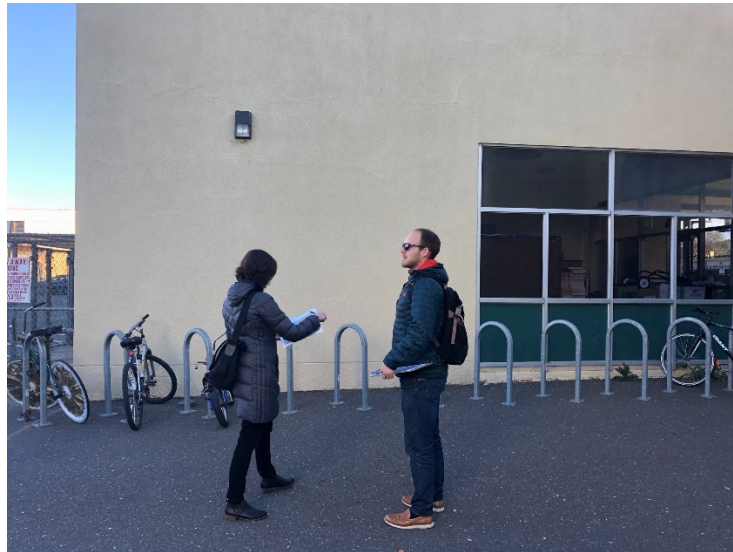
The sidewalk along the school frontage has heavy pedestrian traffic, and food vendors serve students food.

8. 69th Avenue / Hamilton Street

- ◆ SSA participants observed cars double parked on 69th Avenue in front of the Lockwood Early Childhood Center. Double-parked vehicles caused congestion and a queue of vehicles on 69th Avenue coming from International Boulevard.

9. On Campus

- ◆ The schoolyard has 10 inverted u-racks for students and staff to use.



Inverted bicycle u-racks in Community United school yard.

Recommendations

Recommendations to improve infrastructure or operations surrounding Community United Elementary School and Futures Elementary School are shown on the conceptual improvement plan found on the following page.

The following improvements are recommendations for policy and program implementation at Community United Elementary School and Futures Elementary School to increase safety and active commutes to school.

Policy & Program Recommendations

- ◆ Implement a rolling drop off beginning in the 2018-19 school year on 69th Street to streamline drop off and pick up for Community United Elementary and Futures Elementary. Work closely with staff and parents to create a schedule of who will supervise and assist in the rolling drop off.
- ◆ Community United and Futures should develop school programs to discourage bad parking behavior on 69th Street, such as cars parking on or blocking the sidewalk.
- ◆ Distribute Recommended Walk/Bike Maps to students and their families in an effort to promote walking and biking to school on suggested routes. Safety tips are also

included on these maps to promote good behavior among bicyclists, pedestrians, and drivers. SR2S resources would be very useful in creating these documents.

- ◆ Work with parents to connect them with others who live nearby to increase the number of students carpooling, which may reduce the number of vehicles coming to campus.
- ◆ Community United and Futures are currently working to organize a daily Walking School Bus. Consider expanding program to include multiple routes from different locations.
- ◆ Participate in more SR2S events, including Bike Rodeos, Pedestrian Safety Rodeos, and the Rock the Block Assembly.
- ◆ Participate in SR2S evaluations each fall and spring to monitor progress on mode shift goals.