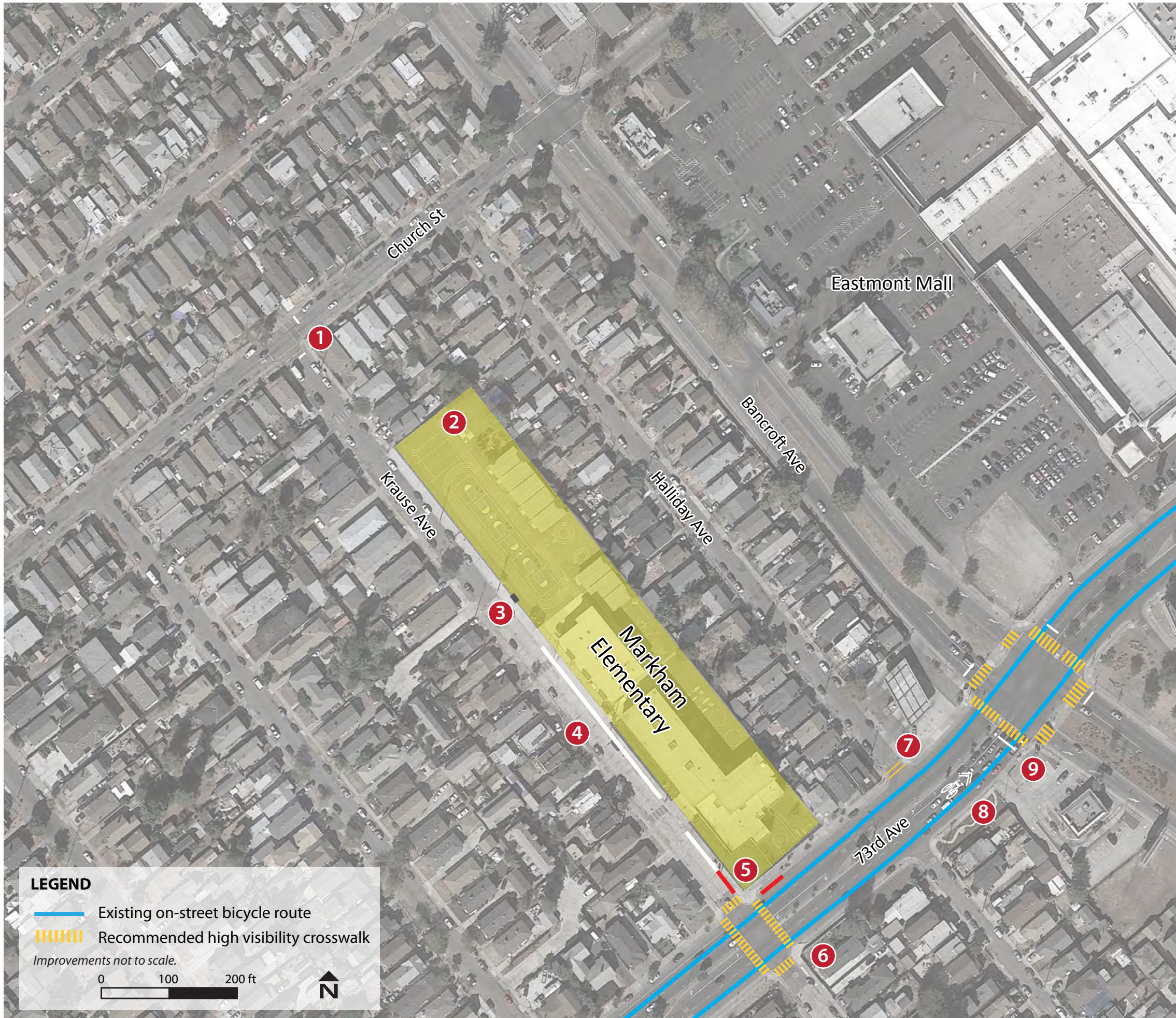


Markham Elementary School, Oakland

DRAFT

Safe Routes to Schools Improvement Plan

Site Assessment held May 2016



- 1 Krause Ave. / Church St. Intersection**
Refresh paint on crosswalks and install advance stop bars to improve pedestrian visibility.
 - 2 Staff Parking Lot**
Consider converting the northwest corner of the playground to staff parking to allow more on-street parking and drop-off space for parents and improve circulation around the school. The current gate would be used as a vehicle entrance.
 - 3 Pedestrian Entrance**
Install an additional fence door for pedestrians to prevent conflicts with vehicles.
 - 4 Parent Loading Zone**
Designate space in front of the school as a loading zone to improve circulation around the school.
 - 5 School Bus Loading Zone**
Paint curb red to prevent vehicles from blocking the bus loading area.
 - 6 Krause Ave. / 73rd Ave. Intersection**
Install high visibility crosswalks as part of pedestrian hybrid beacon to improve pedestrian visibility. Note: installation of a pedestrian hybrid beacon is scheduled for December 2016.
 - 7 Halliday Ave. / 73rd Ave. Intersection**
Install a transverse crosswalk to improve pedestrian visibility.
 - 8 73rd Ave. Bicycle Route**
Continue bicycle lane striping along NE segment of 73rd Ave to improve bicyclist visibility.
 - 9 Bancroft Ave. / 73rd Ave. Intersection**
Consider installing high visibility crosswalks and advance stop bars to designate space for cyclists.
- Non-infrastructure Recommendations**
- Consider using Eastmont Mall parking lot as Park & Walk site. Pilot during SR2S events and programs.
 - Explore funding opportunities for additional secure bicycle parking, locks, and helmets.
 - Conduct training and education for parents about safe drop-off procedures.