

PROPOSED IMPROVEMENTS TO EAST 26TH STREET, OAKLAND CA



East 26th Street at 23rd Avenue



East 26th Street at Grande Vista Avenue

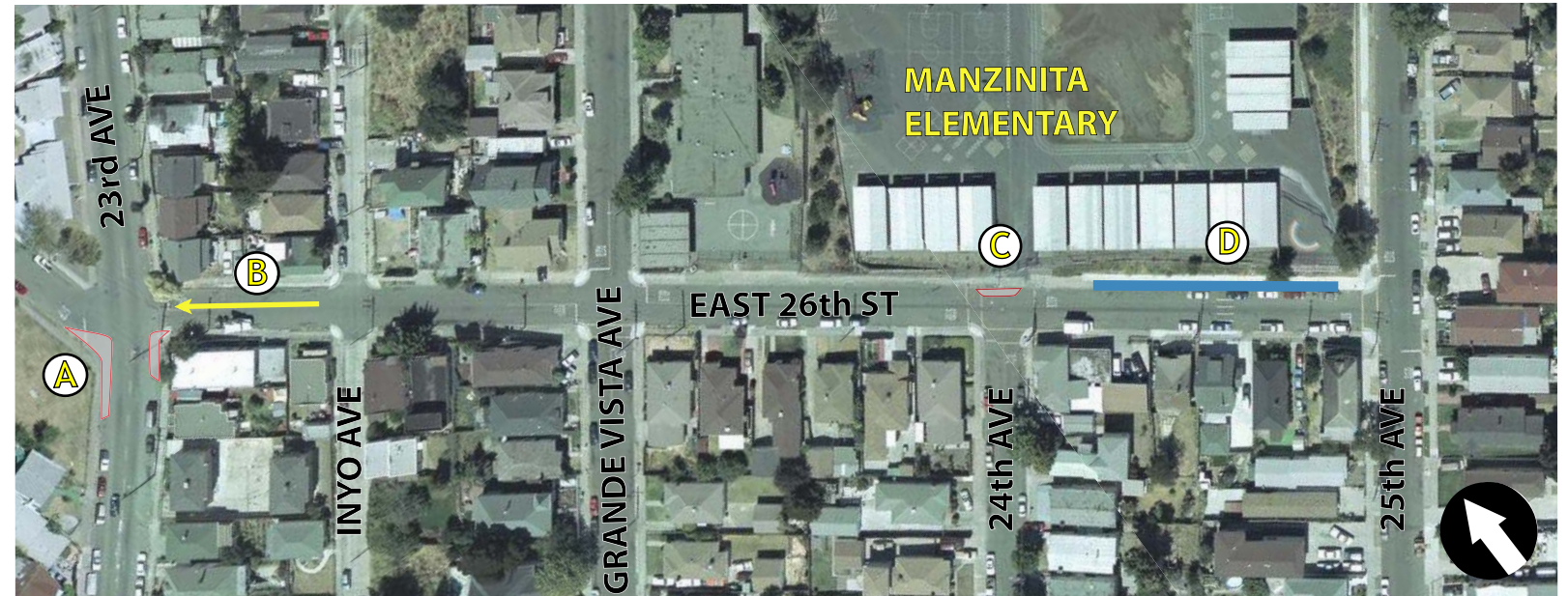


East 26th Street at 24th Avenue

EXISTING CONDITIONS

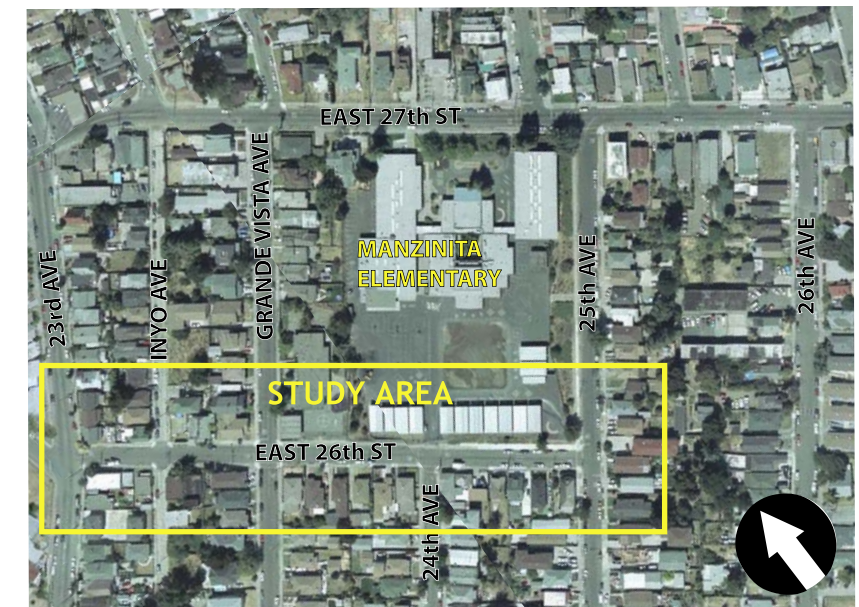
- ① Wide intersection at East 26th Street and 23rd Avenue encourages excessive motor vehicle speeds on 23rd Avenue and results in longer pedestrian crossing times and exposure times to the traffic
- ② Steep slope (18%) on East 26th Street and Grande Vista Avenue limits safe sight distance of pedestrians in crosswalk and crossing vehicles
- ③ The STOP signs do not control exhibition driving on East 26th Street and 24th Avenue and the current crossing distance width exposes students to these driver actions.

Additional note: Street lighting at 25th Avenue and 26th Avenue is not sufficient



PROPOSED IMPROVEMENTS

- Ⓐ Install curb extensions on the south side of 23rd Avenue at East 26th Street
- Ⓑ Study conversion of East 26th Street to one-way westbound between Inyo Avenue and 23rd Street
- Ⓒ Install 6' curb extension at East 26th Street and 24th Avenue to decrease pedestrian crossing distance
- Ⓓ Consider an additional drop-off/pick-up zone along East 26th Street between 24th Avenue and 25th Avenue to reduce demand for East 27th Street
- Ⓔ Review street lighting around the perimeter of the school and improve lighting where needed



0 ft 500 ft

