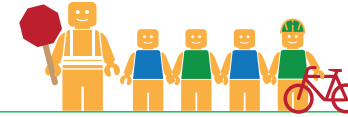


STROBRIDGE ELEMENTARY SCHOOL



Public Works Agency
Alameda County

ALAMEDA COUNTY UNINCORPORATED AREAS SAFE ROUTES TO SCHOOL PLAN



PROJECT OVERVIEW

Strobridge Elementary School is located in Hayward, California, and is part of the Hayward Unified School District. In 2016-17 there were 550 students enrolled at Strobridge Elementary School. An on-site walk audit was conducted on Wednesday afternoon, May 24th, 2017 with school administrator Wendy Sagi, Patrick Gilster (F&P), and Diwu Zhou (F&P).



KEY METRICS AT-A-GLANCE



17 (37)
AM(PM) Peak Hour
Pedestrians at Major
Intersection Access



10 (8)
AM(PM) Peak Hour
Bicycles at Major
Intersection Access



**Crossing
Guard**
Grove Way/
Bedford Drive intersection

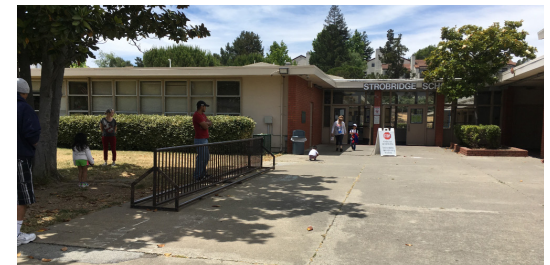


0
Pedestrian-involved
collisions adjacent
to school



0
Bicycle-involved
collisions adjacent
to school

Reported Collisions 2009-2014



ISSUES & CONCERNS

PRIORITY

- 1** Pedestrian circulation and safety
- 2** Visibility concerns on Riverbank Avenue where the roadway bends

GENERAL

- 1** Lack of curb ramps
- 2** Lack of bicycle facilities
- 3** Constrained walkway at internal bus pick-up/drop-off area.
- 4** Sidewalk gaps

COLLISION HISTORY

- 1** No pedestrian collisions reported
- 2** No bicycle collisions reported



PROJECT RECOMMENDATIONS

PRIORITY

- P1** Crosswalk enhancements at the mid-block crosswalk on Bedford Drive.
Addresses Issue(s): Priority 1 & 2, General 1
- P2** Parking restrictions and sidewalk repairs on Riverbank Avenue.
Addresses Issue(s): Priority 2, General 4

GENERAL

- G1** Construct curb ramps on Grove Way from Oak Street to Tanglewood Drive, on Riverbank Avenue from the school to Kahlert Avenue, and along the easement from Kahlert Avenue to Tanglewood Drive.
Addresses Issue(s): Priority 1, General 1
- G2** Intersection enhancements at the Bedford Drive/Grove Way intersection
Addresses Issue(s): Priority 1, General 1
- G3** As an onsite improvement, widen constrained walkway at bus pick-up/drop-off
Addresses Issue(s): General 3
- G4** As an onsite improvement, upgrade parking lot across the school.
Addresses Issue(s): Priority 1
- G5** Construct sidewalks on Grove Way between Tanglewood Drive and Orange Avenue and between Foothill Boulevard and Oak Street.
Addresses Issue(s): General 4

STROBRIDGE ELEMENTARY SCHOOL



LEGEND

- # Priority Recommendation
- # General Recommendation
- Sidewalk/Curb Extension
- Red Curb
- Sidewalk Repair
- School Crossing Assembly & Pedestrian Activated Warning Device
- Curb Ramp

