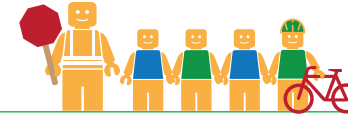


ROYAL SUNSET HIGH SCHOOL

ALAMEDA COUNTY UNINCORPORATED AREAS SAFE ROUTES TO SCHOOL PLAN



Public Works Agency
Alameda County



PROJECT OVERVIEW

Royal Sunset High School is located in Hayward, California, and is part of the San Lorenzo Unified School District. In 2016-17 there were 135 students enrolled at Royal Sunset High School. An on-site walk audit was conducted on Thursday afternoon, May 4th, 2017 with Principal Abigail Kotzin, Ryan McClain (F&P), and Teresa Peterson (F&P).



KEY METRICS AT-A-GLANCE



142 (127)
AM(PM) Peak Hour
Pedestrians at Major
Intersection Access



5 (9)
AM(PM) Peak Hour
Bicycles at Major
Intersection Access



**Crossing
Guard**
None



5
Pedestrian-involved
collisions adjacent
to school



0
Bicycle-involved
collisions adjacent
to school

Reported Collisions 2009-2014



ISSUES & CONCERNS

PRIORITY

- 1** Pedestrian access and safety at the Royal Avenue/Bartlett Avenue intersection
- 2** Vehicle speeds on Royal Avenue
- 3** Parents observed making unsafe maneuvers to pick-off/drop-off students

GENERAL

- 1** Pedestrian path of travel obstructions
- 2** Sidewalk gaps on West Sunset Boulevard

COLLISION HISTORY

- 1** Pedestrian-involved collisions due to vehicles not yielding to pedestrians
- 2** No bicycle collision reported adjacent to school. Bicycle collisions reported along Washington Avenue and Hesperian Boulevard



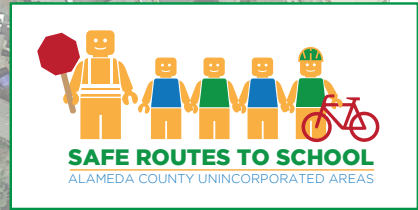
PROJECT RECOMMENDATIONS

PRIORITY

- P1** Install crosswalks with high-visibility ladder striping and curb extensions at the Royal Avenue/Bartlett Avenue intersection.
Addresses Issue(s): Priority 1
- P2** Traffic calming along Royal Avenue
Addresses Issue(s): Priority 2
- P3** Remove second driveway entrance on Royal Avenue.
Addresses Issue(s): Priority 3

GENERAL

- G1** As an onsite improvement, install pedestrian walkway to connect sidewalk with northwestern-most parking lot
Addresses Issue(s): General 1
- G2** Sidewalk gap closures around school
Addresses Issue(s): General 2



LEGEND

- Priority Recommendation
- General Recommendation
- Sidewalk/Curb Extension
- Curb Ramp

0' 100' 200'
Improvements not to scale