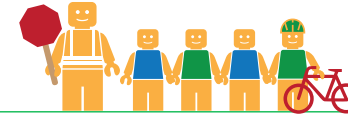


BAY ELEMENTARY SCHOOL

ALAMEDA COUNTY UNINCORPORATED AREAS SAFE ROUTES TO SCHOOL PLAN



Public Works Agency
Alameda County



PROJECT OVERVIEW

Bay Elementary School is located in San Lorenzo, California, and is part of the San Lorenzo Unified School District. In 2016-17 there were 508 students enrolled at Bay Elementary School. An on-site walk audit was conducted on Thursday afternoon, May 11th, 2017 with Principal Kimberly Years, Patrick Gilster (F&P), and Teresa Peterson (F&P).



KEY METRICS AT-A-GLANCE



162 (23)
AM(PM) Peak Hour
Pedestrians at Major
Intersection Access



2 (9)
AM(PM) Peak Hour
Bicycles at Major
Intersection Access



**Crossing
Guard**
Bockman Road/
Via Walter intersection



3
Pedestrian-involved
collisions adjacent
to school



0
Bicycle-involved
collisions adjacent
to school

Reported Collisions 2009-2014



ISSUES & CONCERNS

PRIORITY

- 1** Pedestrian access and safety at the Bockman Road/Via Amigo intersection
- 2** Pedestrian/Vehicle conflicts in school driveway
- 3** Pedestrian visibility concerns along school frontage

GENERAL

- 1** AC transit bus stop located on school frontage
- 2** Parents use staff parking lot as loading zone

COLLISION HISTORY

- 1** Pedestrian-involved collisions due to vehicles not yielding to pedestrians in crosswalks
- 2** No bicycle collision reported adjacent to school. Bicycle collisions reported along Washington Avenue and Hesperian Boulevard



PROJECT RECOMMENDATIONS




PRIORITY

- P1** Via Amigos and Bockman Rd Crossing Improvements
Addresses Issue(s): Priority 1
- P2** Install additional signage to discourage left turns into the passenger loading zone. Paint hatch marks in the left exiting lane to discourage left turns out of the exiting driveway. Lower fence height to improve pedestrian visibility.
Addresses Issue(s): Priority 2
- P3** Install curb extensions at the Bockman Road/Via Walter intersection and paint a passenger loading zone east of the crosswalk.
Addresses Issue(s): Priority 3

GENERAL

- G1** Relocate or remove the AC Transit Bus Stop and restrip as a loading zone.
Addresses Issue(s): General 1
- G2** Provide additional signage to designate staff parking lot.
Addresses Issue(s): General 2
- G3** Install curb extensions at the Bockman Road/Via Catherine intersection.
Addresses Issue(s): Priority 3

LEGEND

- # Priority Recommendation
- # General Recommendation
- Sidewalk/Curb Extension
- White Curb
-  No Left Turn Sign
-  Curb Ramp
-  AC Transit Bus Stop



BAY ELEMENTARY SCHOOL

PASSENGER
LOADING
ONLY
7:00-8:00
AM
DAILY

0' 100' 200'
Improvements not to scale

FEHR PEERS