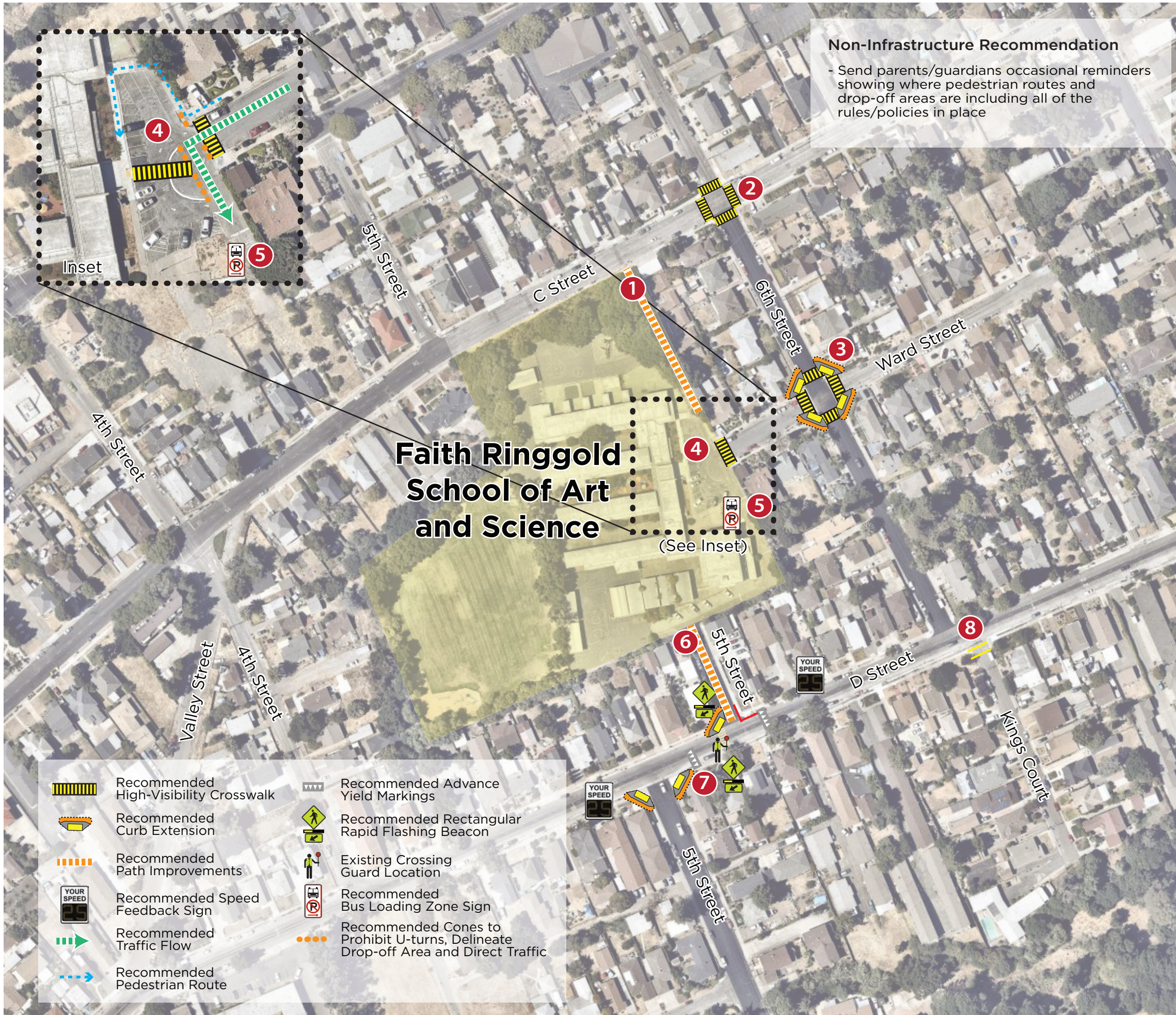


Faith Ringgold School, Hayward

Safe Routes to Schools Improvement Plan

Site Assessment held February 2017



Non-Infrastructure Recommendation
 - Send parents/guardians occasional reminders showing where pedestrian routes and drop-off areas are including all of the rules/policies in place

- 1 School Access Path off C Street**
 - Improve and repave path
 - Trim vegetation along path for access
- 2 6th Street / C Street**
 - Install high visibility crosswalks at all 4 legs
- 3 6th Street / Ward Street**
 - Install curb extensions at all 4 corners of intersection
 - Install high visibility crosswalks at all 4 legs (installation by city pending)
- 4 Ward Street / School Parking Lot**
 - Upgrade existing crosswalk to high visibility crosswalk
 - Prohibit U-turn and direct all traffic to exit via 5th Street/D Street
 - As an interim measure, install high visibility crosswalk through parking lot, restripe parking lot and use cones to prohibit u-turn, delineate drop off area, and direct traffic (see enlargement)
 - In the long term, repave parking lot and create a raised median for drop off area with a highly visible, raised crosswalk through the parking lot. Raised median could be used as a gateway to the school.
- 5 Bus Unloading Zone**
 - Install "Bus Loading Zone" sign
 - Improve unloading area with pavement and bench
 - Encourage school bus drivers to move along (ok as drop off, but not as parking)
- 6 5th Street / School Frontage**
 - Establish a path through Key Academy or stripe/pave a path for students/parents to access Faith Ringgold Elementary from this Entrance.
- 7 D Street / 5th Street**
 - Install rectangular rapid flashing beacons at existing high visibility crosswalk
 - Install advance yield warnings and speed feedback signage at southwest and northeast legs
 - Install red curb at northeast corner as shown to improve visibility
 - Install curb extension at northwest corner as shown
 - Consider installing curb extensions at the south leg of 5th Street as shown as a long-term option
 - Existing crossing guard at this location
- 8 D Street / 5th Street**
 - Install transverse crosswalk at south leg

	Recommended High-Visibility Crosswalk		Recommended Advance Yield Markings
	Recommended Curb Extension		Recommended Rectangular Rapid Flashing Beacon
	Recommended Path Improvements		Existing Crossing Guard Location
	Recommended Speed Feedback Sign		Recommended Bus Loading Zone Sign
	Recommended Traffic Flow		Recommended Cones to Prohibit U-turns, Delineate Drop-off Area and Direct Traffic
	Recommended Pedestrian Route		

Improvements not to scale
 0 200 ft



The above items are recommendations only and based on Safe Routes to Schools site assessment best practices. Feasibility determination, final design, accessibility, funding, and implementation of any recommended improvements is the responsibility of the appropriate governing agency.