

Attachment D. Proposed Improvements for John Muir Elementary School

Overview Map

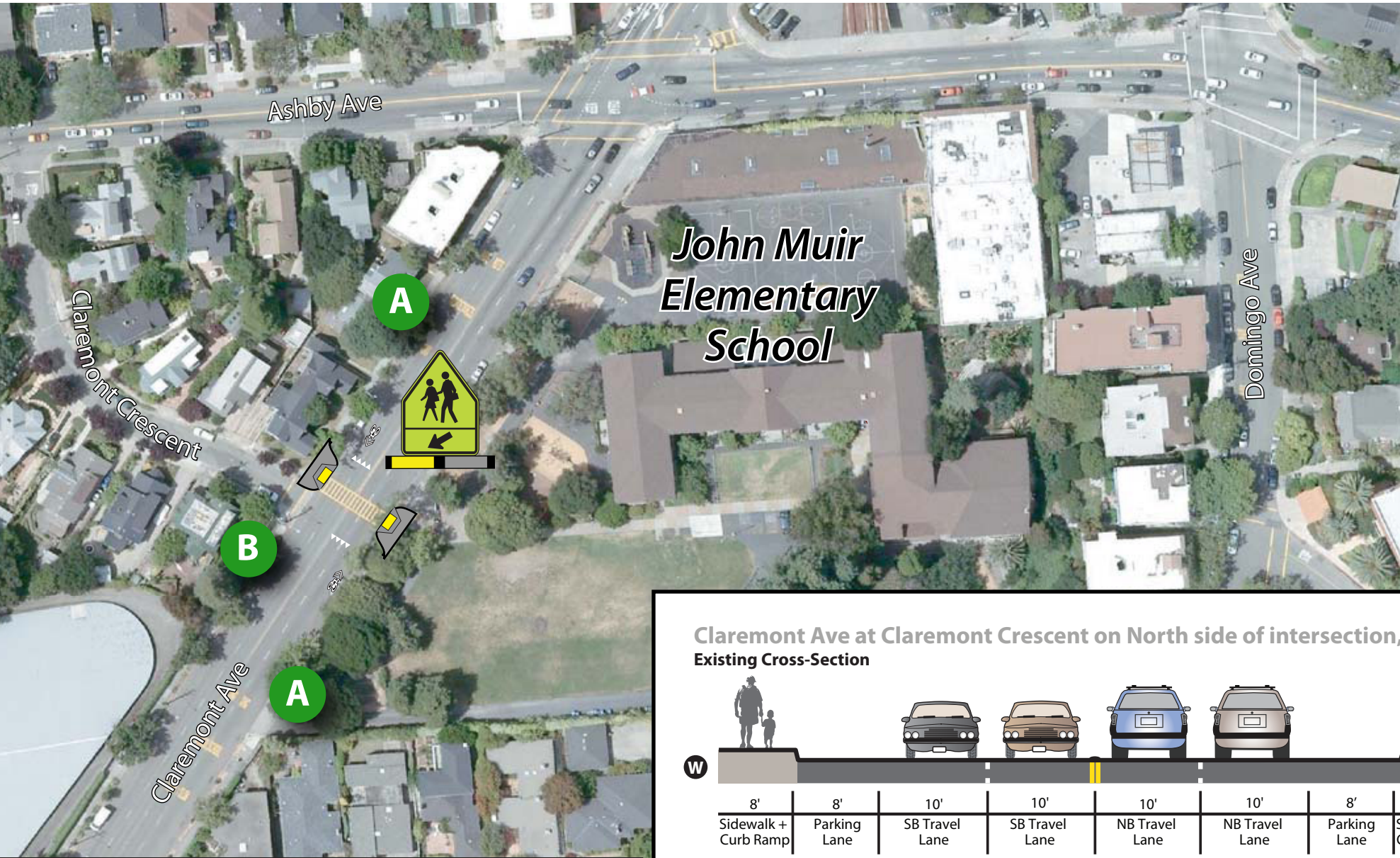
General Construction Items

A. Claremont Avenue, South of Ashby Avenue

- 6. Install Speed Feedback Sign

B. Claremont Avenue at Claremont Crescent (see cross-section inset on this page and intersection details on page D-2)

- 7. Remove pole and mast arm and install new pole and mast arm
- 8. Install RRFBs with Warning Signs on mast arm
- 9. Install RRFB, Warning Signs, and push button on Pole
- 10. Install luminaire and pole
- 11. Install MUTCD Assembly A warning signs
- 12. Construct concrete sidewalk
- 13. Construct concrete curb and gutter
- 14. Construct curb ramp and detectible warning surface
- 15. Pavement delineation
- 16. Adjust manhole to grade
- 17. Drainage inlet and connection to SD pipe
- 18. Remove concrete and AC pavement

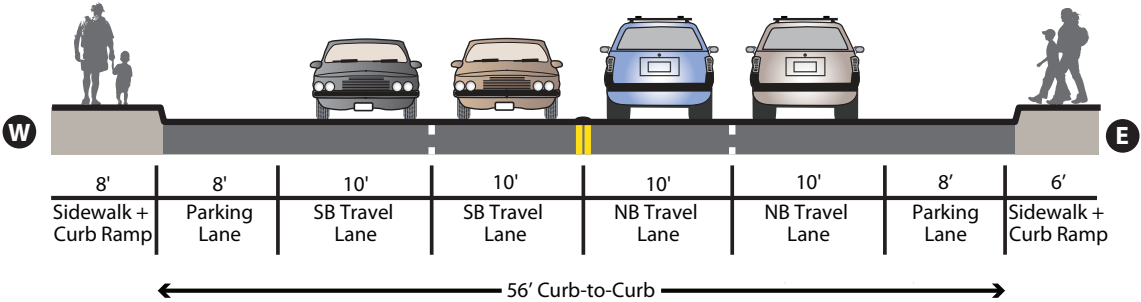


Example Configuration

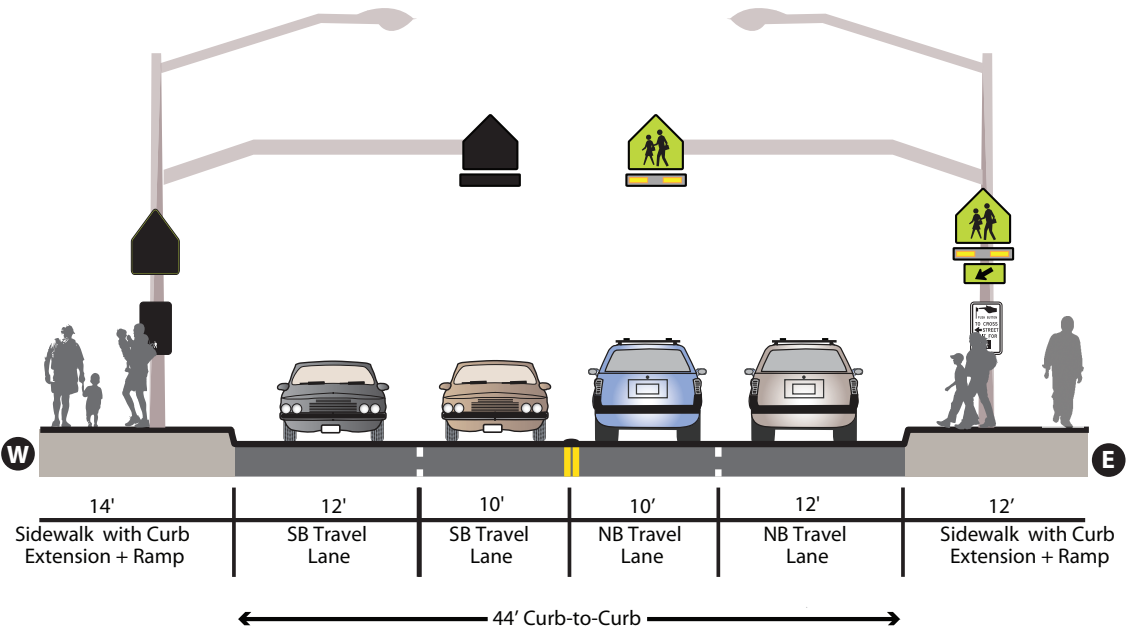
Luminaire located above mast arm, Sir Francis Drake Boulevard at Fairfax Public Library, Marin CA



Claremont Ave at Claremont Crescent on North side of intersection, facing North Existing Cross-Section



Proposed Cross-Section with Curb Extension



B