

PROPOSED IMPROVEMENTS TO EAST 26TH STREET, OAKLAND CA



East 26th Street at 23rd Avenue



East 26th Street at Grande Vista Avenue

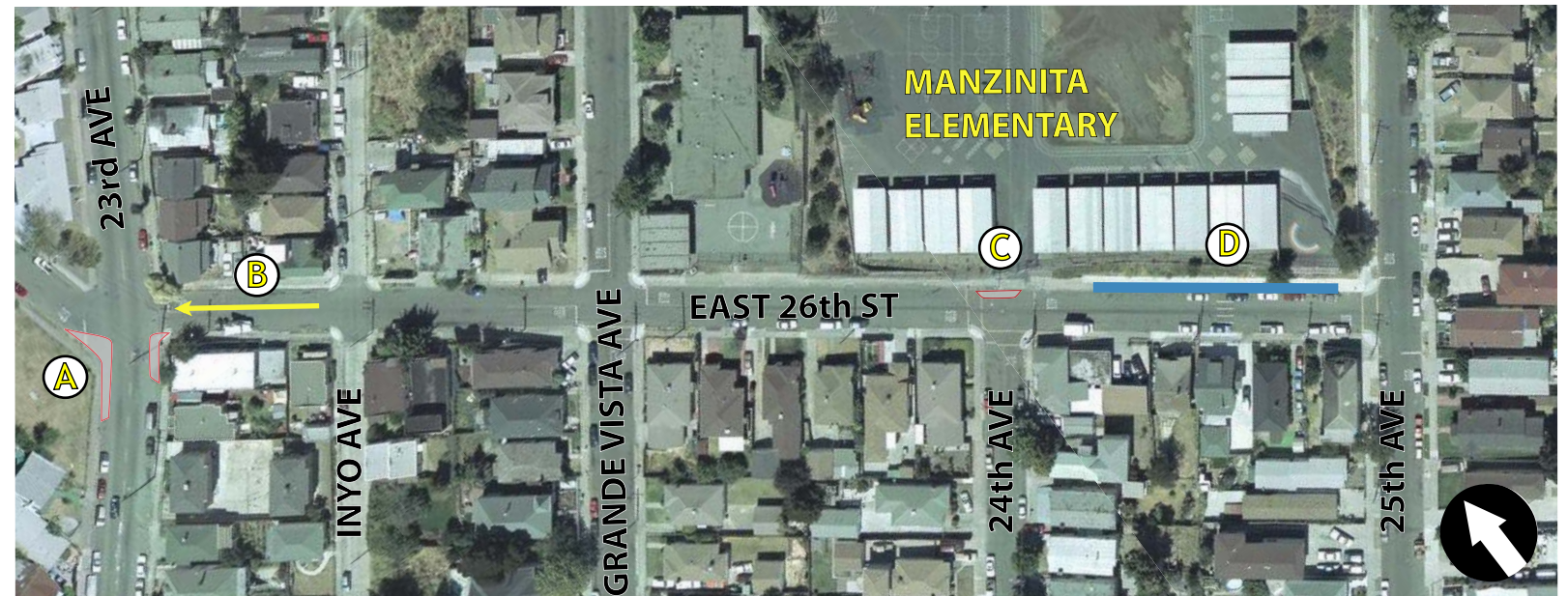


East 26th Street at 24th Avenue

EXISTING CONDITIONS

- ① Wide intersection at East 26th Street and 23rd Avenue encourages excessive motor vehicle speeds on 23rd Avenue and results in longer pedestrian crossing times and exposure times to the traffic
- ② Steep slope (18%) on East 26th Street and Grande Vista Avenue limits safe sight distance of pedestrians in crosswalk and crossing vehicles
- ③ The STOP signs do not control exhibition driving on East 26th Street and 24th Avenue and the current crossing distance width exposes students to these driver actions.

Additional note: Street lighting at 25th Avenue and 26th Avenue is not sufficient



PROPOSED IMPROVEMENTS

- Ⓐ Install curb extensions on the south side of 23rd Avenue at East 26th Street
- Ⓑ Study conversion of East 26th Street to one-way westbound between Inyo Avenue and 23rd Street
- Ⓒ Install 6' curb extension at East 26th Street and 24th Avenue to decrease pedestrian crossing distance
- Ⓓ Consider an additional drop-off/pick-up zone along East 26th Street between 24th Avenue and 25th Avenue to reduce demand for East 27th Street
- Ⓔ Review street lighting around the perimeter of the school and improve lighting where needed



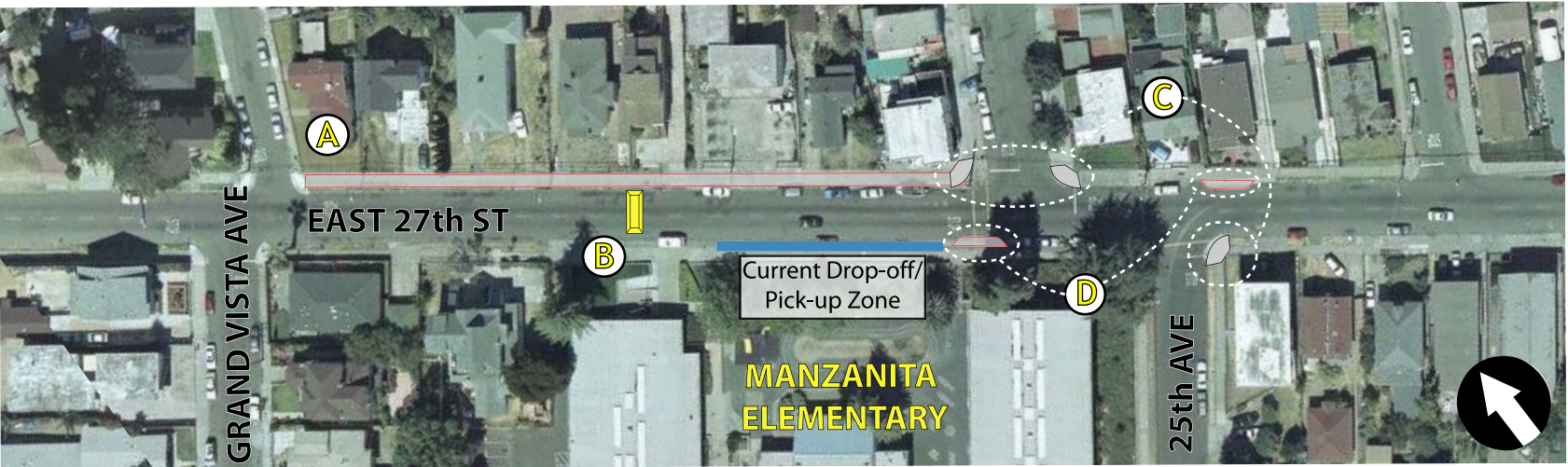
0 ft 500 ft

PROPOSED IMPROVEMENTS TO EAST 27th STREET, OAKLAND CA

EXISTING CONDITIONS

- Motorists speed along East 27th Street
- Sidewalks along East 27th Street are in disrepair
- Intersection at East 27th Street and 25th Avenue lacks curb ramps, configuration is confusing to motorists and pedestrians
- Additional note: Street lighting at 25th Avenue and 26th Avenue is not sufficient

PROPOSED IMPROVEMENTS



PROPOSED IMPROVEMENTS

- Ⓐ Repair sidewalks along East 27th Street
- Ⓑ Install speed hump along East 27th Street
- Ⓒ Install curb ramps at East 27th Street and 25th Ave
- Ⓓ Construct bulb-outs at the intersection of East 27th Street and 25th Avenue; one at the south west corner and one at the north east corner to narrow street at the approaches.
- Ⓔ Evaluate school site curb space needs by working with school bus operators, school staff, visitors, and parents. Consider shifting 4th and 5th graders to East 26th Street. Also, consider if need monitoring or supervision staff. (See Improvement Plan for East 26th Street)

Review street lighting around the perimeter of the school and improve lighting where needed.



0 ft 500 ft



Traffic on East 27th Street in front of school



Illegal parking on East 27th St at 25th Ave

PROPOSED IMPROVEMENTS ON GRANDE VISTA AVENUE & 25TH AVENUE, OAKLAND CA

EXISTING CONDITIONS

Wide roadway allows for speeding motor vehicle traffic along Grande Vista Avenue and 25th Avenue

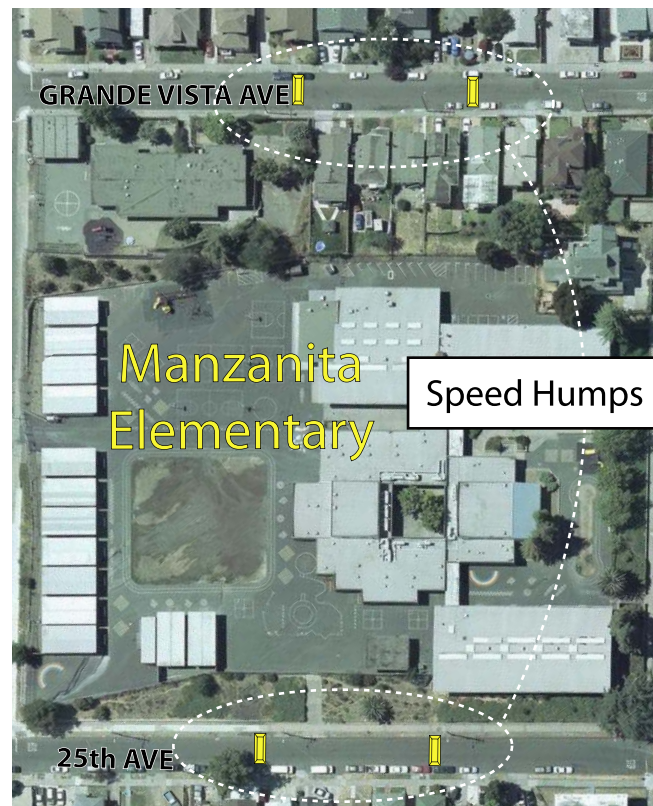


25th Avenue in front of school

PROPOSED IMPROVEMENTS

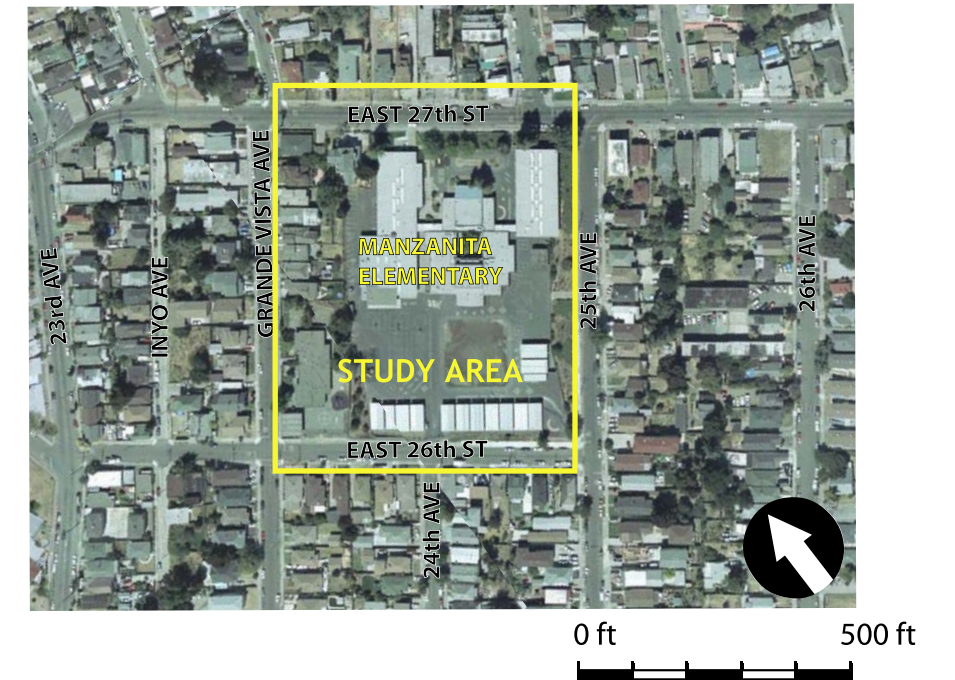
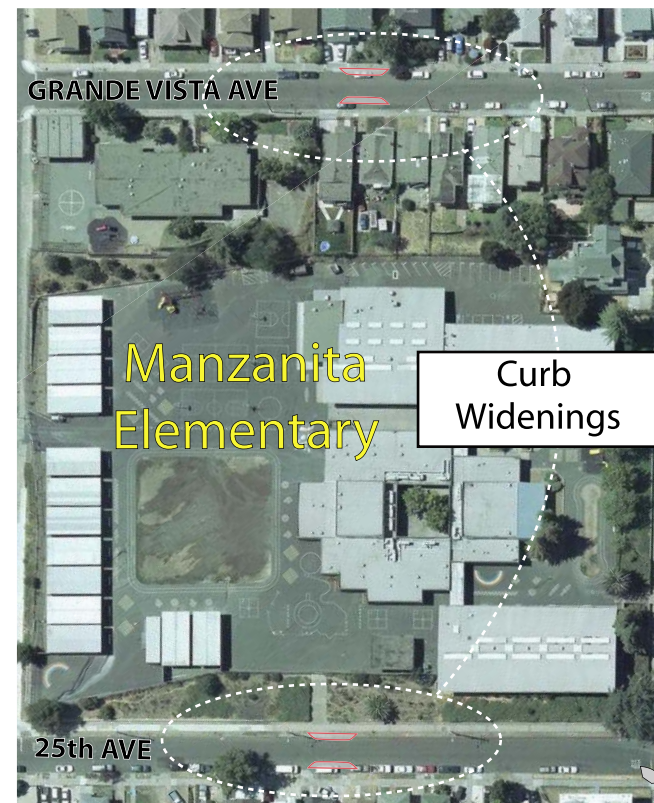
ALTERNATIVE A

Install speed humps along Grande Vista Avenue and 25th Avenue adjacent to the school (if City standards met). On 25th Avenue, if AC Transit can not relocate bus service, consider Alternative B.



ALTERNATIVE B

If humps are not preferred or City standards are not met, install 10' long sidewalk widenings on both sides of 25th Avenue to narrow roadway to 20' curb-to-curb.



GENERAL COMMENTS FOR MANZANITA SCHOOL

- 1) Review previous attempts at traffic control to learn what worked and what did not (e.g., chicanes on 25th Ave).
- 2) Review all existing striping and signing - repaint or upgrade as necessary.
- 3) Develop programs to increase walking and carpooling (e.g., walking school bus).
- 4) Meet with and discuss school bus service concerns and needs. Develop procedures/policies (e.g., no double parking) that minimize parking conflicts but do so in a manner that does not disrupt their service (e.g., provide staff monitoring to minimize drop-off/pick-up conflicts).
- 5) There are no pedestrian ramps at many locations. Review and prioritize installation.
- 6) At the two signalized intersections (Fruitvale at East 27th Street and 23rd Avenue and East 27th Street) consider increasing pedestrian crossing times to accommodate slower walking speeds.
- 7) Evaluate entire school perimeter for appropriate street light levels to ensure city standards are met.