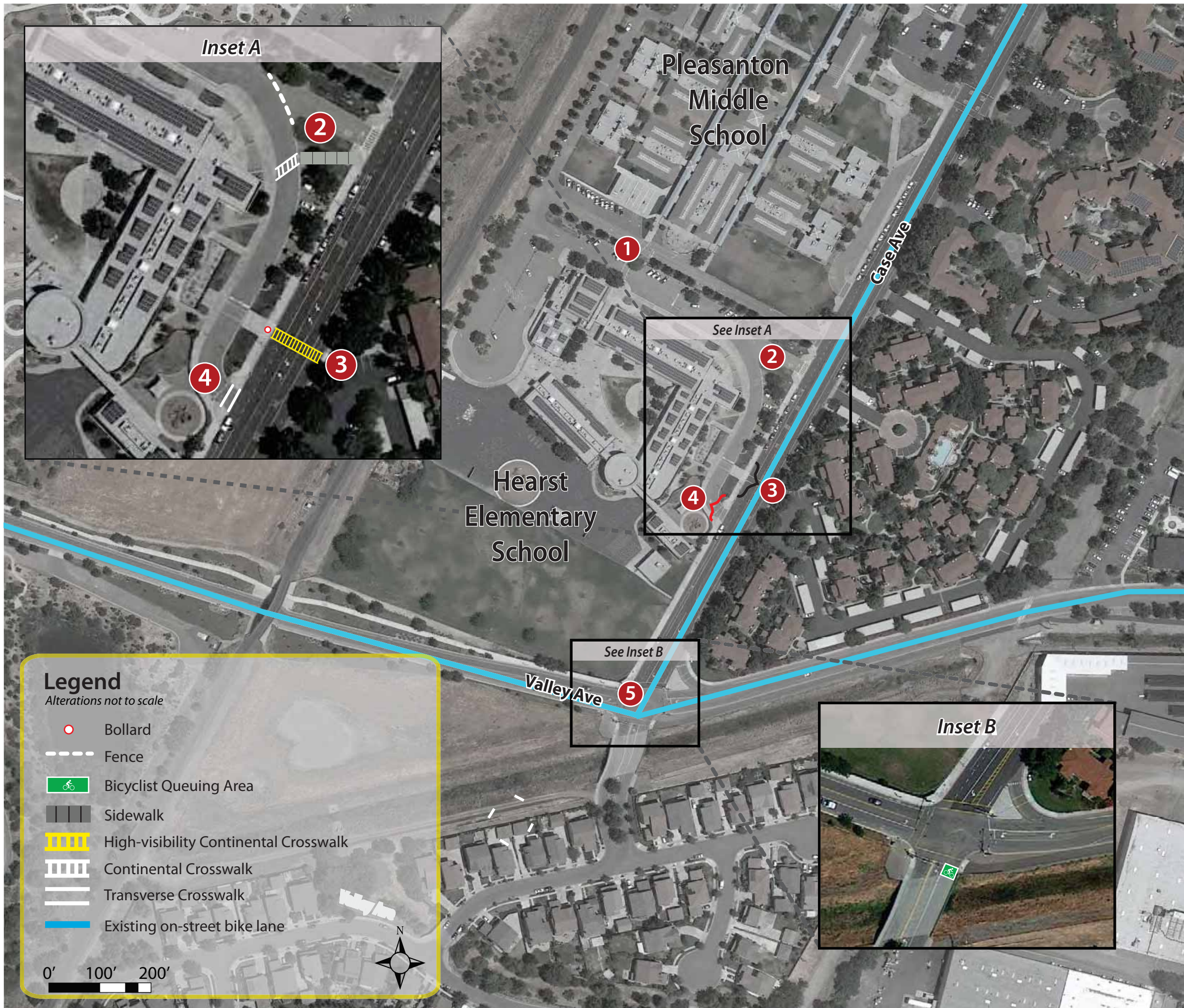


# Hearst Elementary Safe Routes to School Improvement Plan **DRAFT**

Site Assessment held on November 17, 2014



- 1** Hearst Elementary Parking Lot Crosswalk
  - School District is reviewing for improvements
- 2** Southeast School Entrance
  - *Short term* - Consider installing fence at corner to reinforce usage of school entrance further to the south. Refresh disabled parking access striping.
  - *Long term* - Consider installing path connecting disabled parking access striping and sidewalk to formalize crosswalk.
- 3** Case Avenue midblock crosswalk
  - Install single bollard at path to school entrance
  - Consider relocating speed bump before crosswalk
  - Restripe yellow transverse crosswalk as yellow high visibility crosswalk
- 4** Parking Lot Exit
  - Refresh crosswalk striping
- 5** Valley Avenue at Case Avenue
  - Consider Lead Pedestrian Interval (LPI) signal phasing
  - Construct queuing area for bicyclists exiting the path at the southeast corner

### Areawide Recommendation

- Install truncated domes at all curb ramps

