



Eastin Elementary Safe Routes to School Improvement Plan **DRAFT**

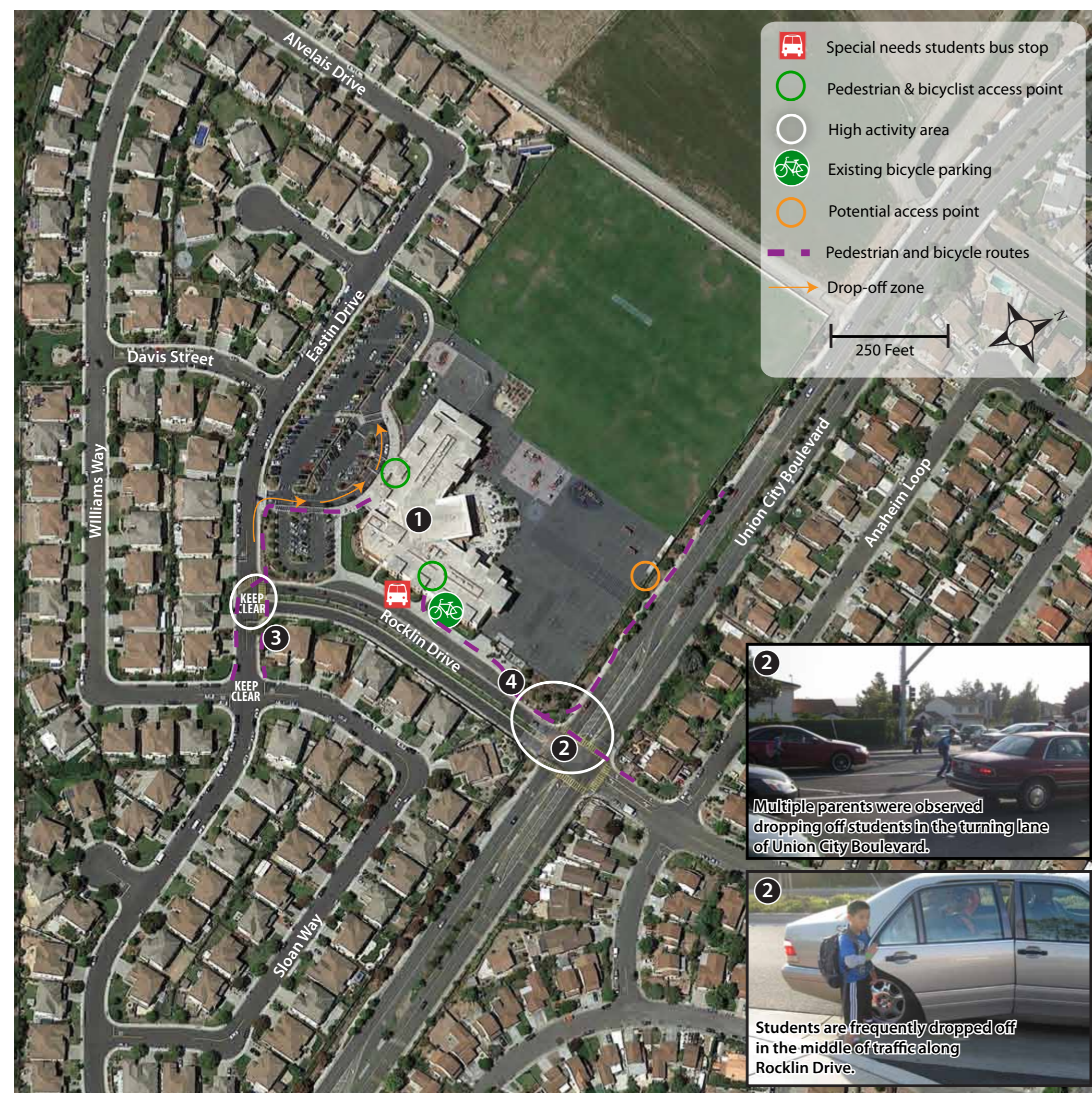
In the past, a publicly funded school bus system transported many Eastin Elementary students to and from school. Since the service was discontinued, significant issues have developed during the morning drop-off period, stemming from a marked increase in the number of parents dropping off their child in personal vehicles.

Rocklin Drive and Eastin Drive forms the central chokepoint of this congestion, delaying inbound traffic as far as midblock on Union City Boulevard. These delays create unsafe conditions for students walking and biking to school, as parents become impatient and frustrated by delays and initiate hazardous drop-off practices. Many parents have begun releasing their children along Rocklin Drive, and onto the curb along Union City Boulevard, which endangers other children walking and biking on an already crowded sidewalk. During a May 2013 site assessment, parents were also witnessed dropping off their children from the left-turn lane on southbound Union City Boulevard, sending the students into the middle of three travel lanes.

The following recommendations address the issues prioritized by the group of parents, school officials, and Union City traffic engineers who participated in the site assessment.

- Special needs students bus stop
- Pedestrian & bicyclist access point
- High activity area
- Existing bicycle parking
- Potential access point
- Pedestrian and bicycle routes
- Drop-off zone

250 Feet



- 1 Overall reduction in car traffic**
To address morning drop-off-related congestion, consider aggressive travel demand management strategies, including
 - Actively encourage the development of carpool groups.
 - Research options for funding bus services.
 - Develop Walking School Bus and Bicycle Train programs to encourage students to walk and bike to school in chaperoned groups.

- 2 Safe Drop-off Zones**
To address informal and unsafe drop-off zones, such as those along the sidewalk of southbound Union City Boulevard, in the turning lane median of Union City Boulevard, and along Rocklin Drive, consider the following enforcement strategies:
 - Station police officers at intersection to monitor unsafe drop-offs on the sidewalk and in the turning lane of southbound Union City Boulevard.
 - Designate "Safe School Drop Off" zones, such as the unused bus turn-out south of the Rocklin Drive intersection.
 - Develop a student valet program to assist with morning drop-off efficiency and safety.
 - Remind parents through take-home handouts about safe school drop-off practices and discourage unsafe behaviors, including dropping off students anywhere but the designated loading zone at the entrance to the school.
 - Remind parents that parking in the neighborhoods surrounding Eastin and walking their students to the school grounds is also an option.

- 3 Improve Driver Behavior at Rocklin Drive**
To address U-turns on Rocklin Drive which create safety risks for students walking and biking to school, consider both physical and programmatic enforcement strategies.
 - Enforce no U-turns on Rocklin Drive through periodic traffic control officer monitoring.
 - Consider improvements to existing signage.
 - Mark "KEEP CLEAR" at the intersections of Rocklin Drive and Eastin Drive and at Sloan Way and Eastin Drive.
 - Work with crossing guards to apply best practices for platooning pedestrians.

- 4 Overcrowding on Rocklin Drive sidewalks**
To address crowding on the sidewalk at the intersection of Union City Boulevard and Rocklin Drive, consider increasing the width of the sidewalk or creating alternate entrances.
 - In advance of planned street improvements on Union City Boulevard including a dedicated right turn lane, coordinate with City planning staff to increase the width of the sidewalk at the northwest corner of the intersection.
 - Consider installing a gated entrance on the northeast perimeter of the school to provide an entrance for students walking and biking from the north.
 - Ensure that dumpsters at the northeast corner of the campus do not obstruct sidewalk.

