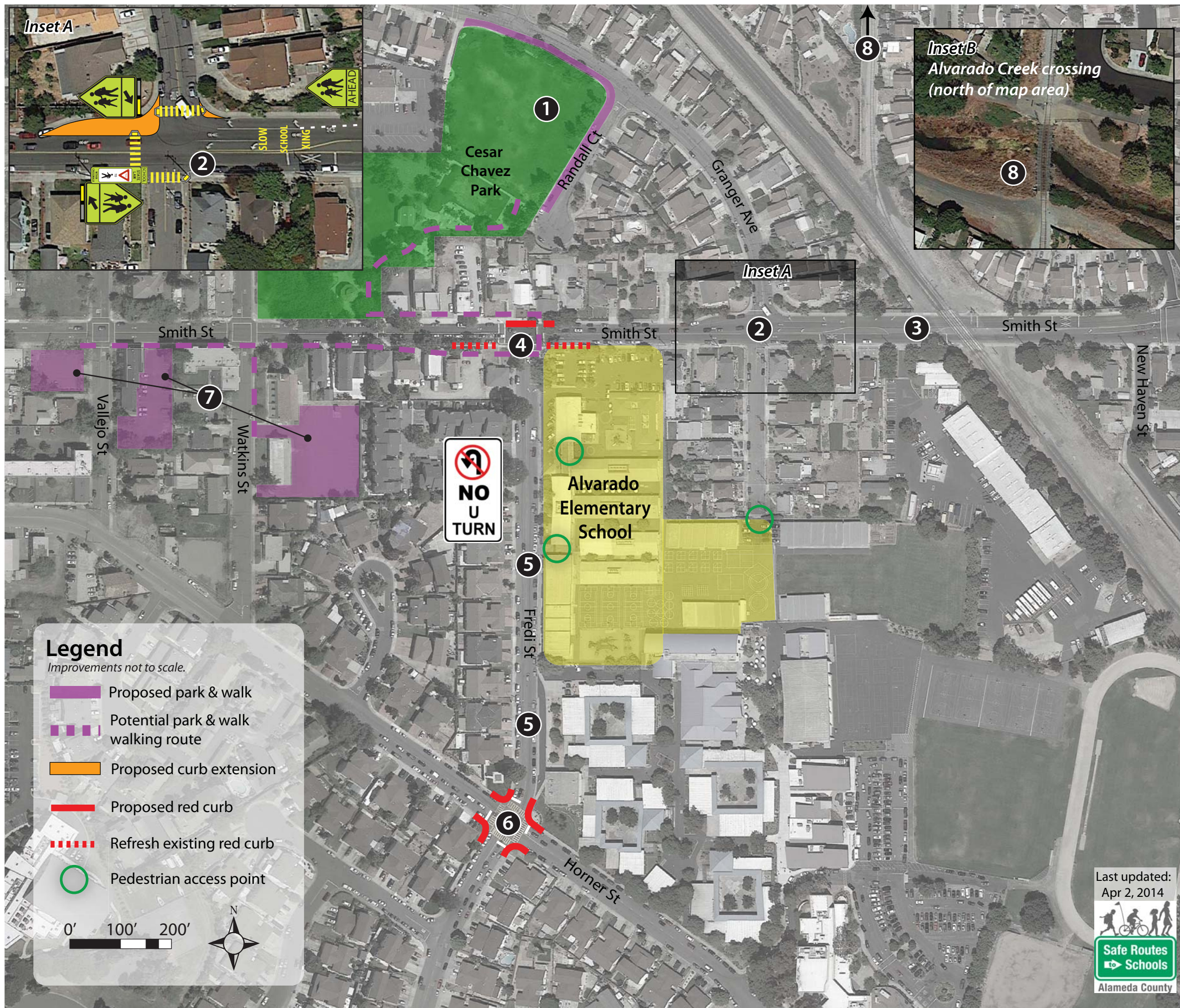


Alvarado Elementary Safe Routes to School Improvement Plan **DRAFT**

Site Assessment held on March 21, 2014



- 1 Cesar Chavez Park**
 - Establish formal Park & Walk location from this park. Consider organizing a Walking School Bus from this drop-off point.
- 2 Granger Avenue at Smith Street**
 - Study reconfiguration of intersection, including:
 - curb extension to remove merging space on west side of intersection.
 - high-visibility crosswalk on west side of intersection with rapid rectangular flashing beacons (RRFB) and in-pavement YIELD paddle.
 - upgraded curb ramps with tactile dome strips.
 - consider restriping 2-to-1 lane merge on Smith Street to the east of the railroad tracks at Tidewater Drive, with a single through lane and a drop right-turn lane onto to Granger Avenue.
- 3 Smith Street Sidewalks**
 - Repair sidewalk on north side of the street where upheaval has created uneven surfaces.
 - Widen sidewalks on both sides of the street between UPRR right of way and New Haven Street
- 4 Smith Street at Fredi Street**
 - Stripe red curb on north side of intersection.
 - Refresh existing red curb on each side of Fredi St.
- 5 Fredi Street**
 - Seek City and District approval to run drop-off valet with parent volunteers and 4th/5th grade safety patrol.
 - Post "No U-Turn" signs if allowed by City.
 - Work with District and City to reconfigure Alvarado Middle School drop-off loop so parents cannot use street side of loop for drop-off; replace "no parking" signs with "no stopping".
- 6 Fredi Street at Horner Street**
 - Stripe red along the curb at each corner of the intersection and stripe advance stop bars to improve pedestrian visibility.
- 7 Remote Drop-Off Locations**
 - Work with local church and businesses to designate their parking lots as remote drop-off locations during the morning.
- 8 Alameda Creek & Rail Road right-of-way**
 - Short term* - include recommendation in school circulation plan to use creek pathway instead of railroad.
 - Long term* - study creation of direct bike/ped connection between Alameda Creek pathway and Tidewater Drive. This would require cooperation and easement rights from railroad operator.
- 9 School Circulation Plan**
 - Develop recommended circulation plan for parents, distribute among parents as part of back-to-school efforts.

Legend
Improvements not to scale.

- Proposed park & walk
- Potential park & walk walking route
- Proposed curb extension
- Proposed red curb
- Refresh existing red curb
- Pedestrian access point

0' 100' 200'

Last updated:
Apr 2, 2014

Safe Routes to Schools
Alameda County